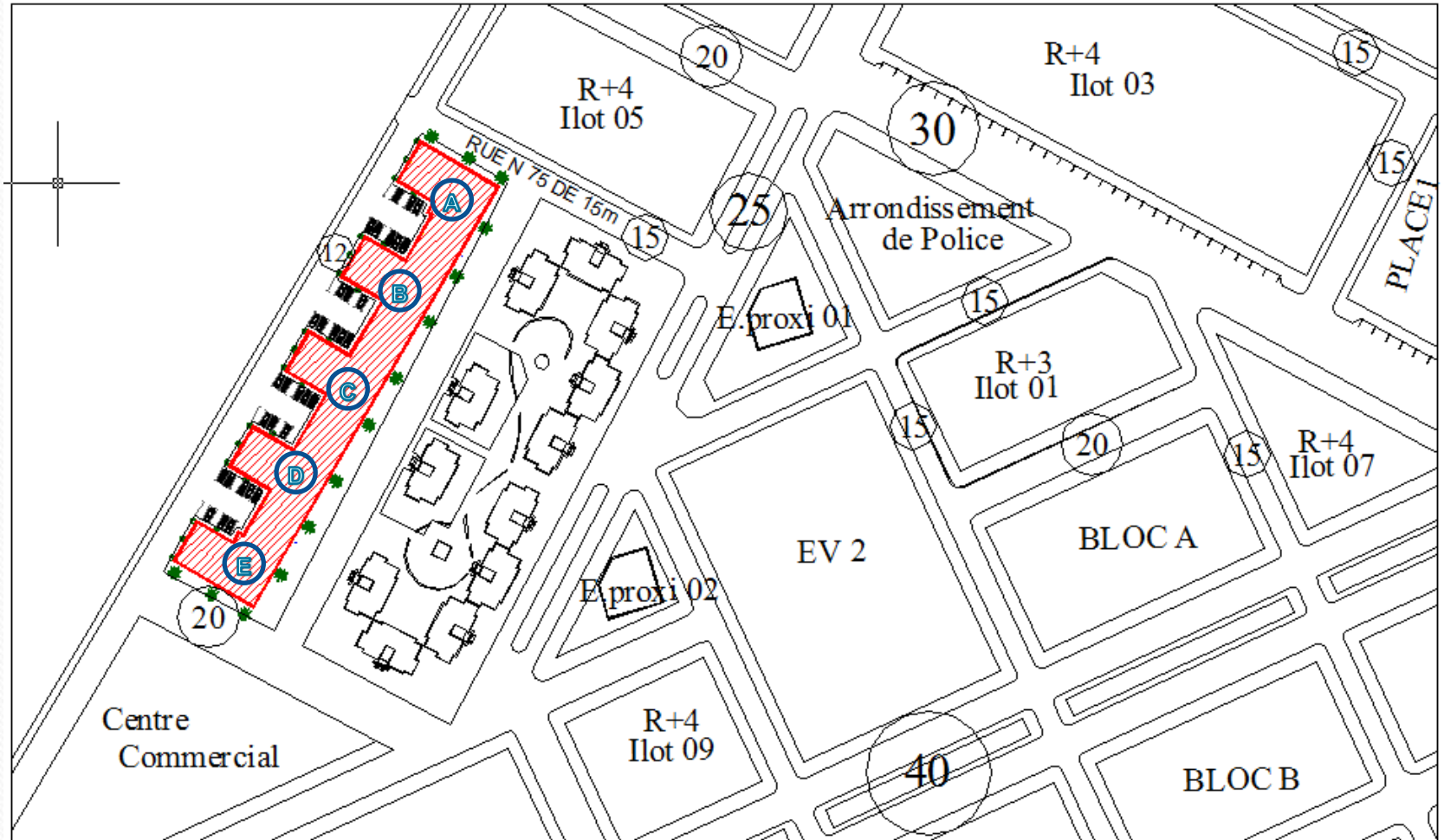


Opération Riyad ms Ilot 6 Zun 4.

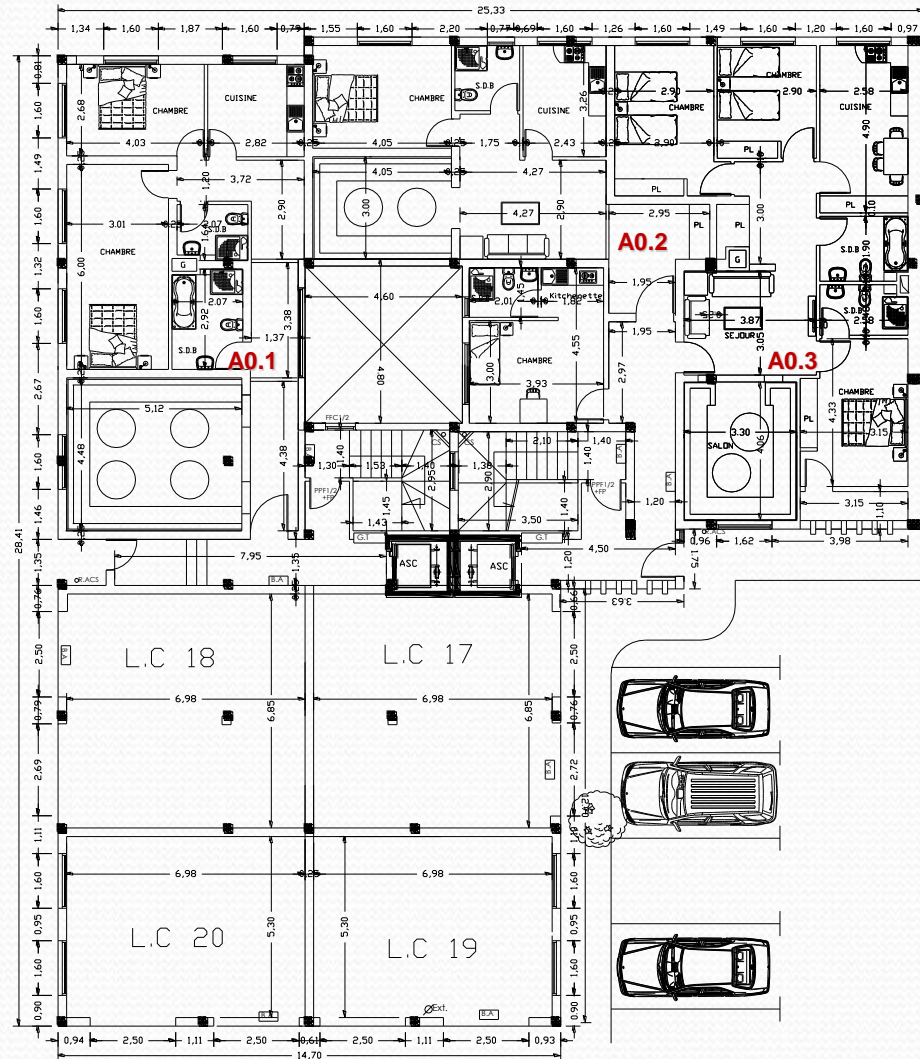


Plaquette commerciale

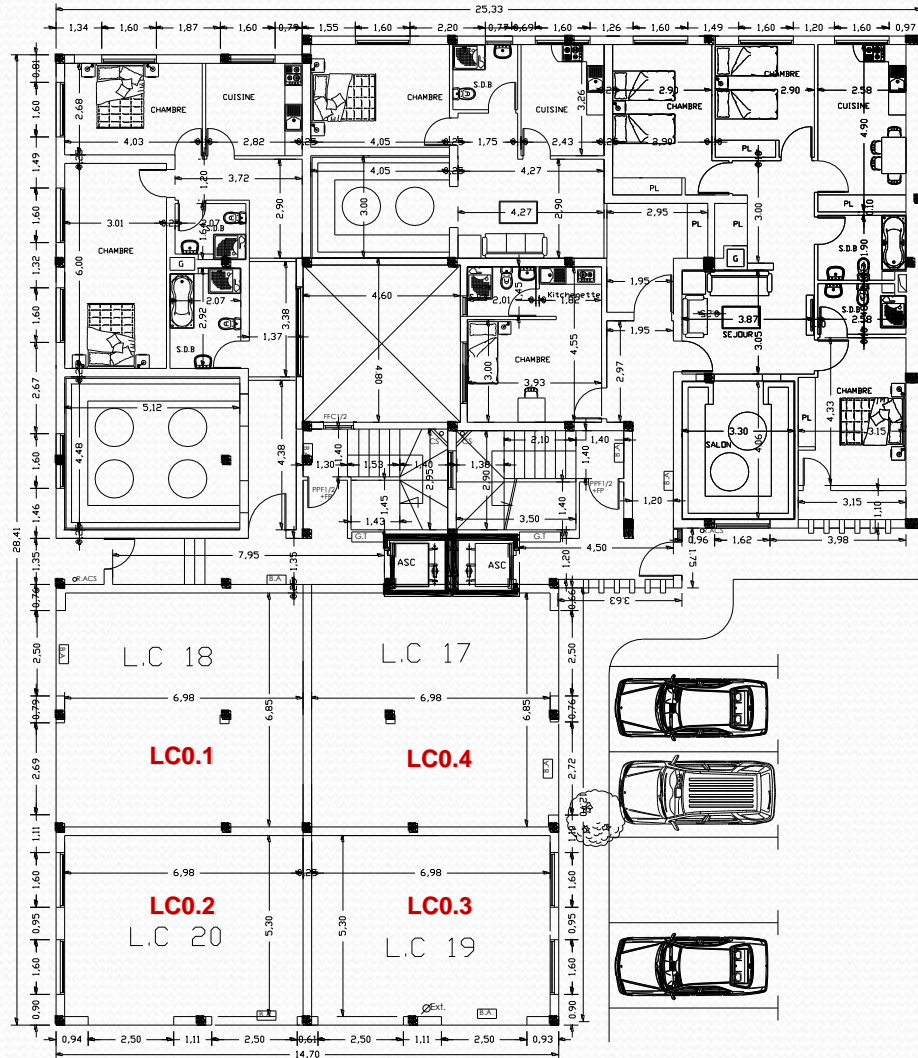
Plan De Masse.



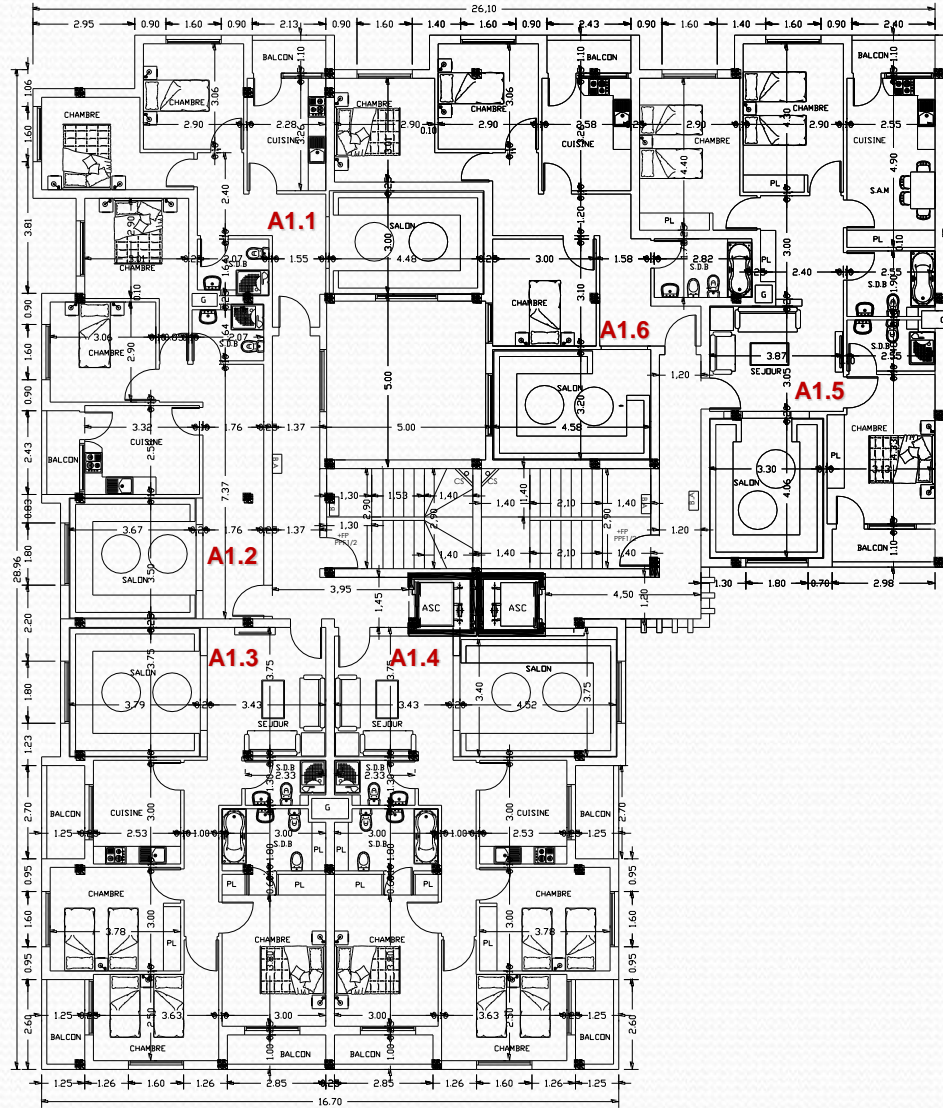
Rez de chaussee bloc A.



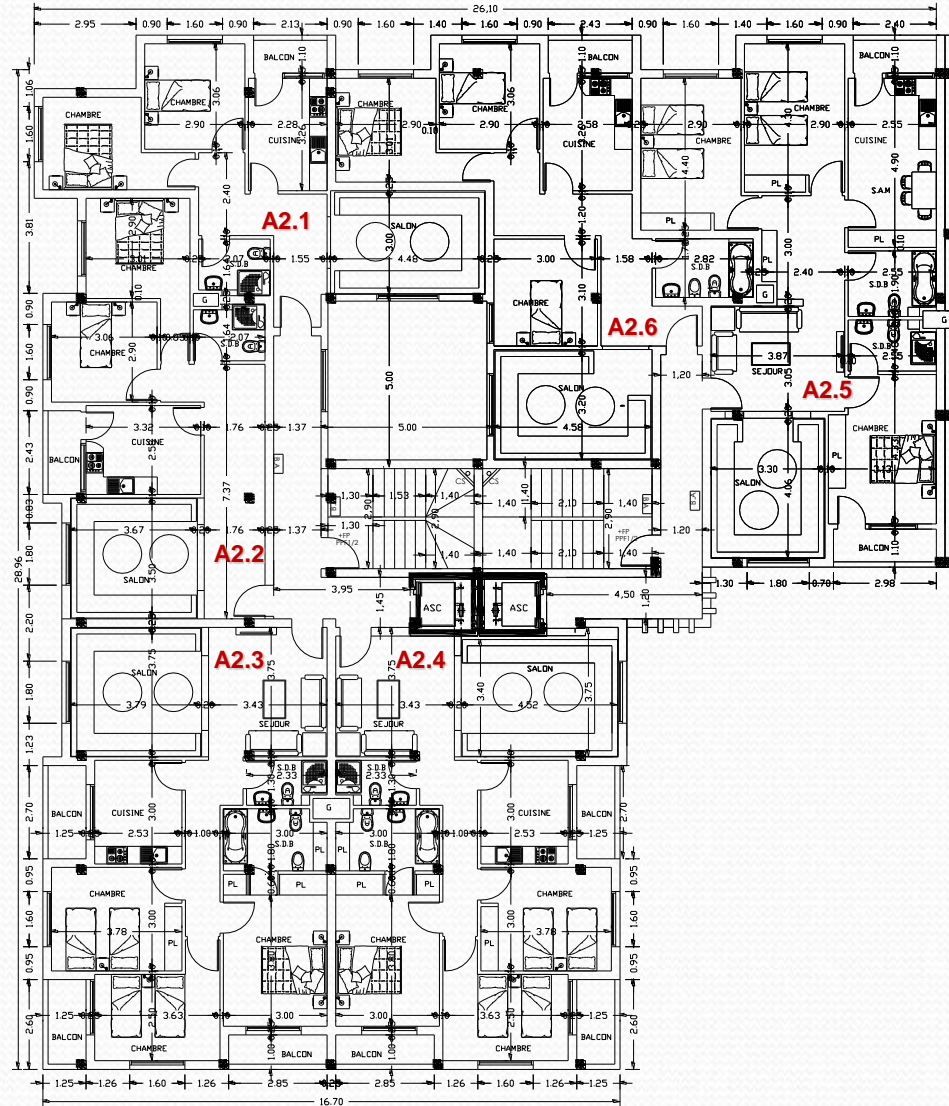
Rez de chaussee local commercial bloc A.



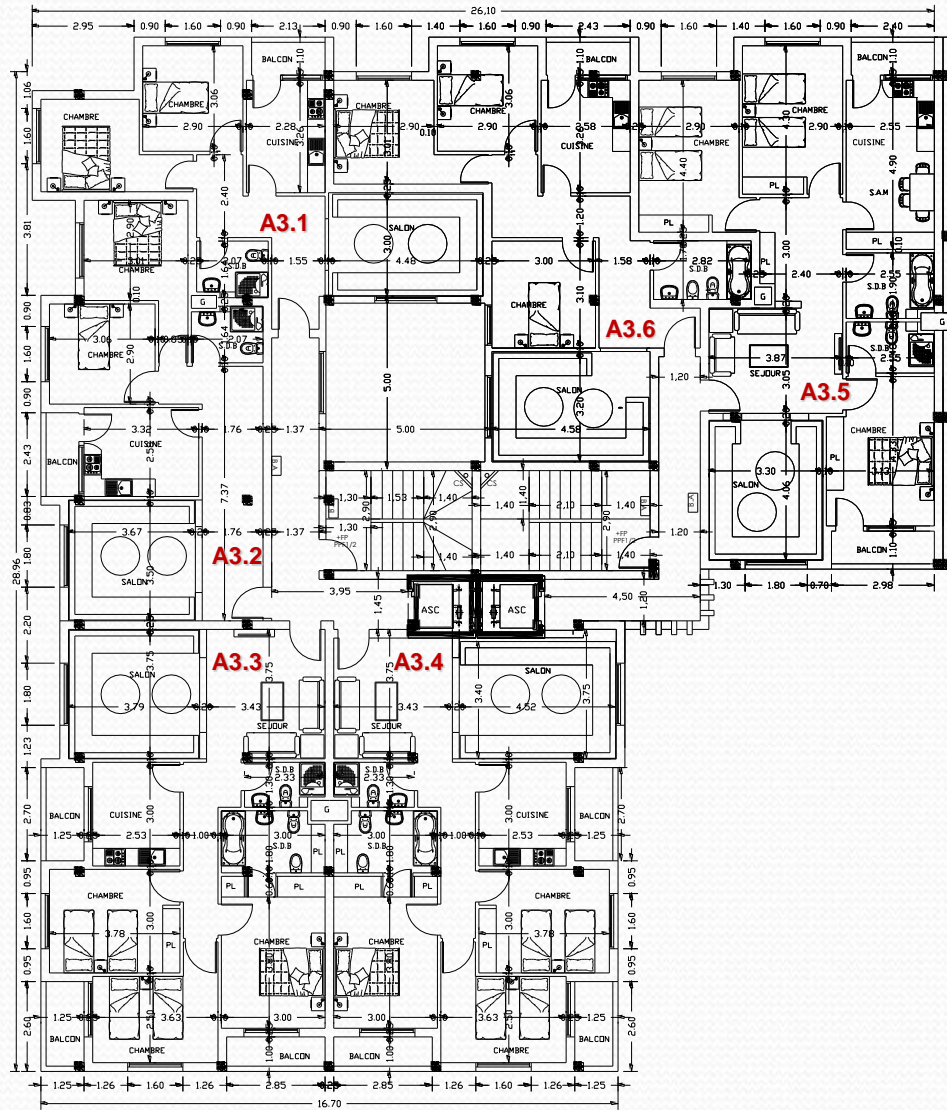
1^{er} étage bloc A.



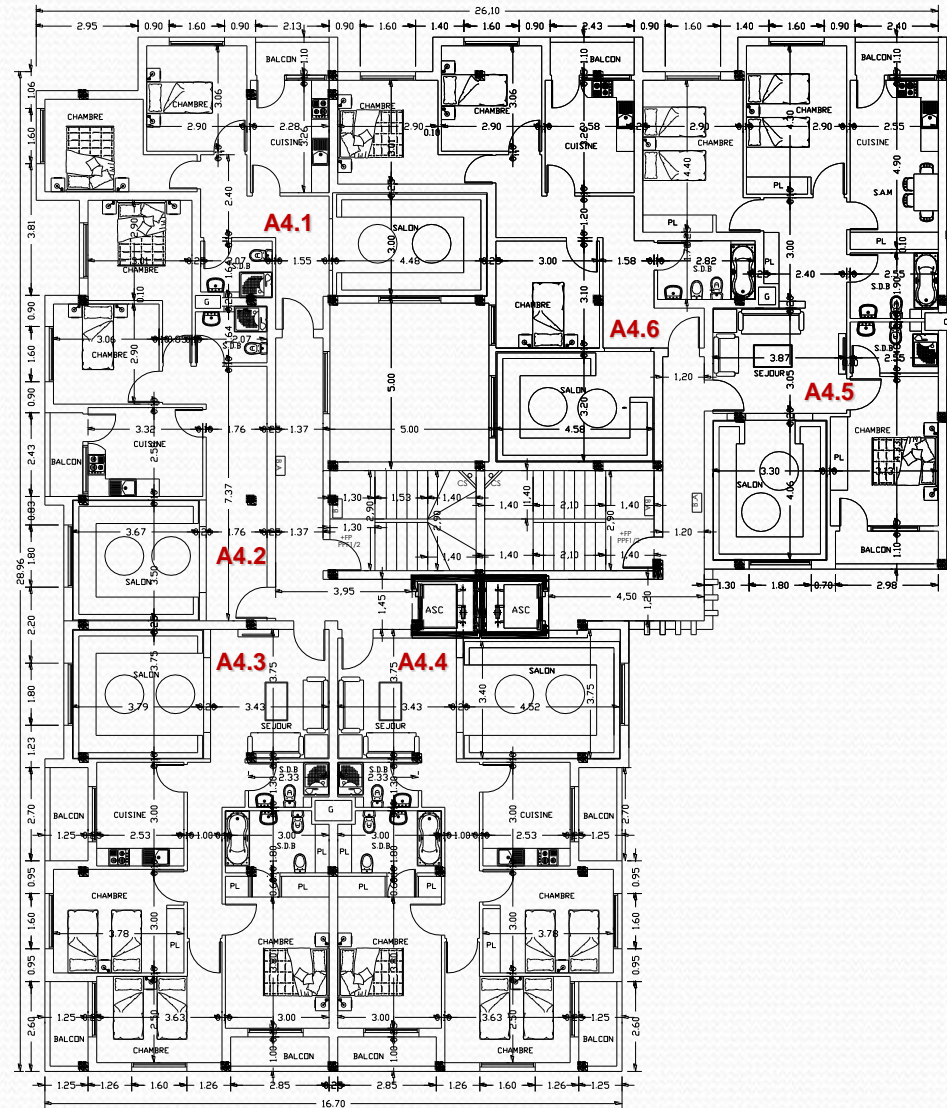
2eme etage bloc A.

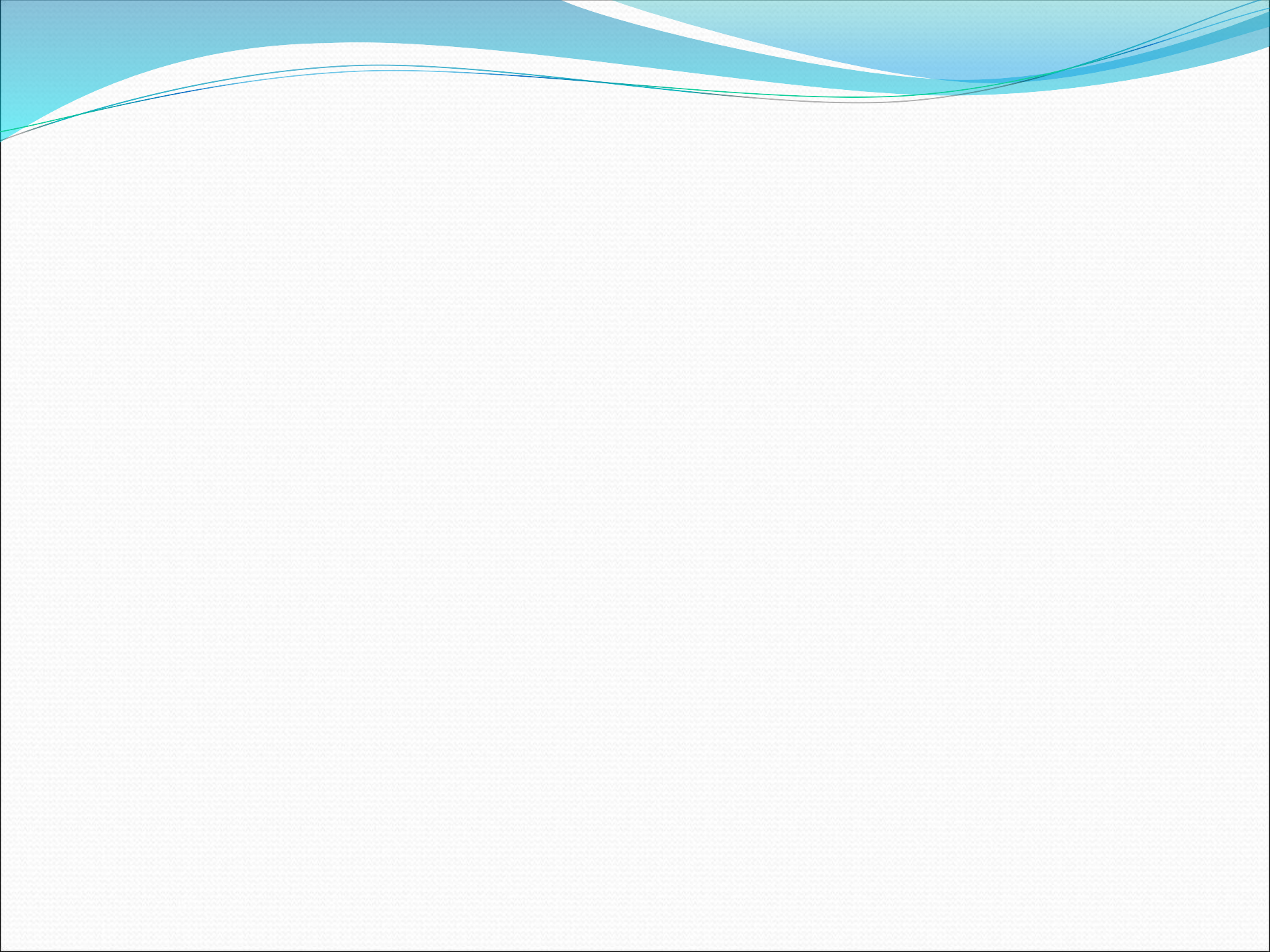


3eme etage bloc A.

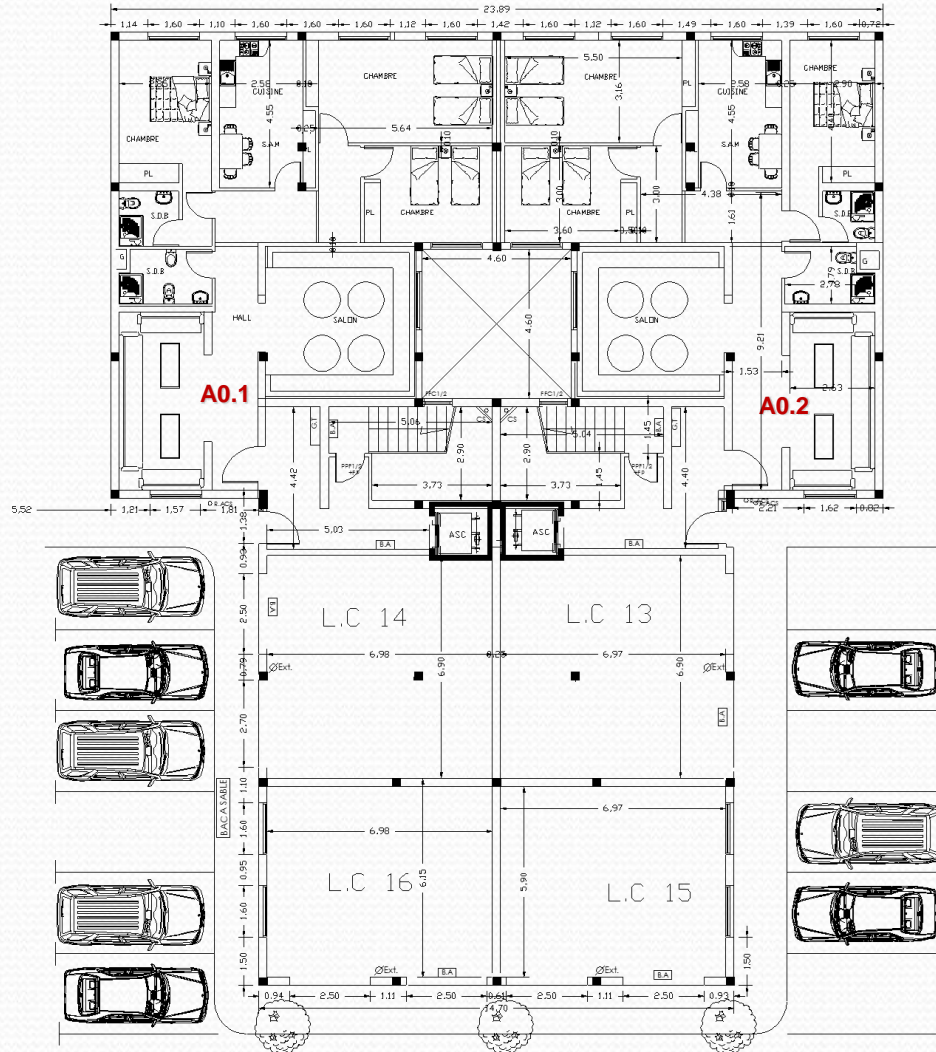


4eme etage bloc A.

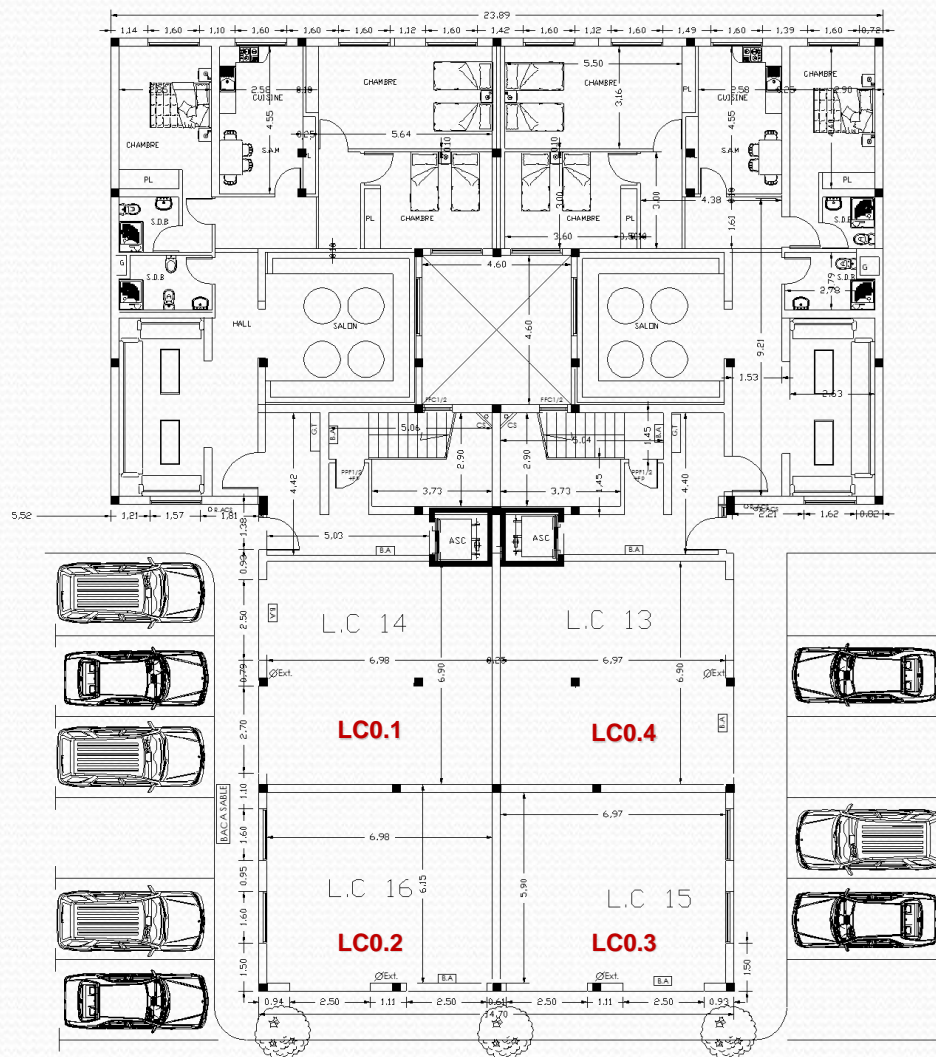




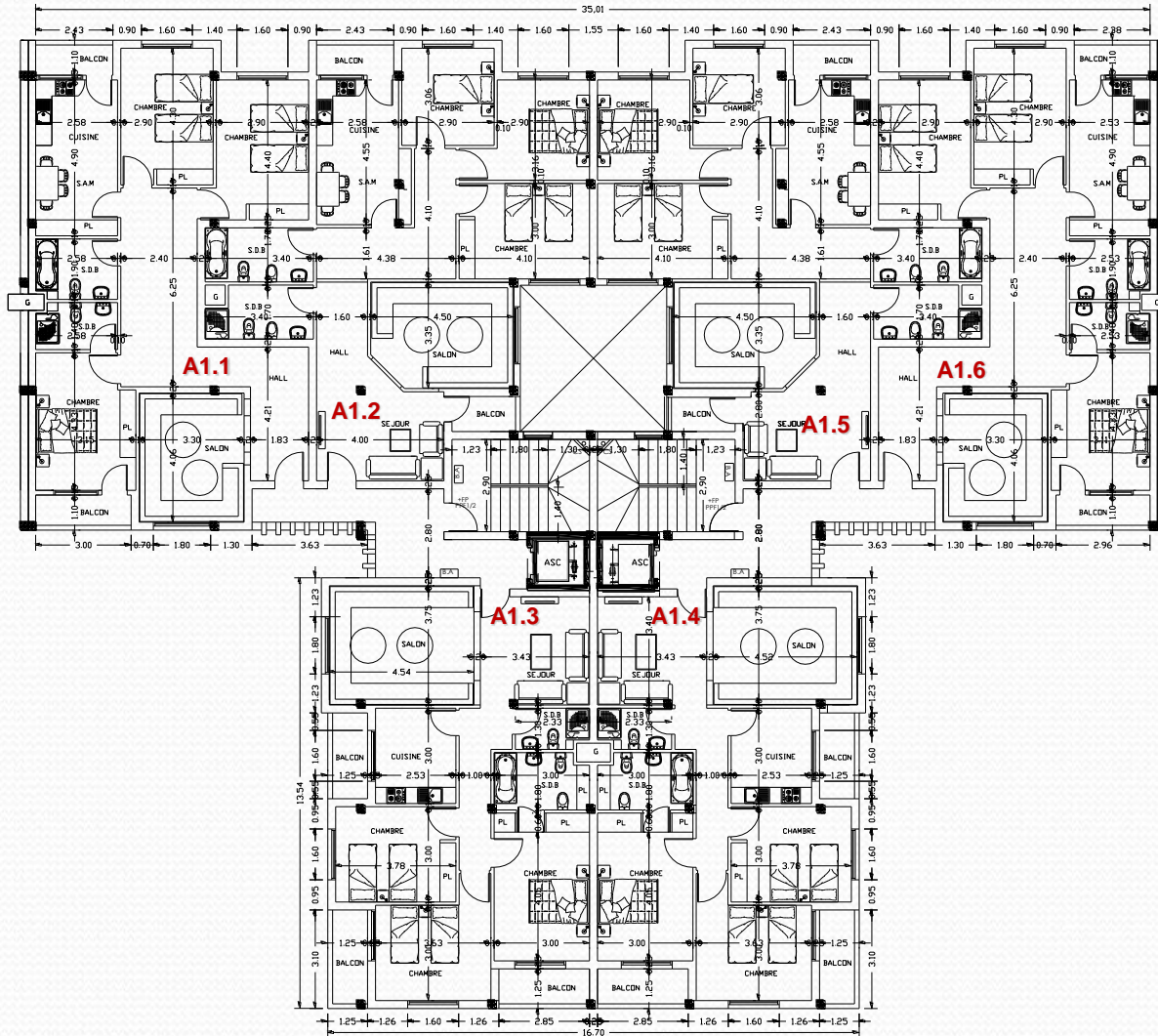
Rez de chaussée bloc B.



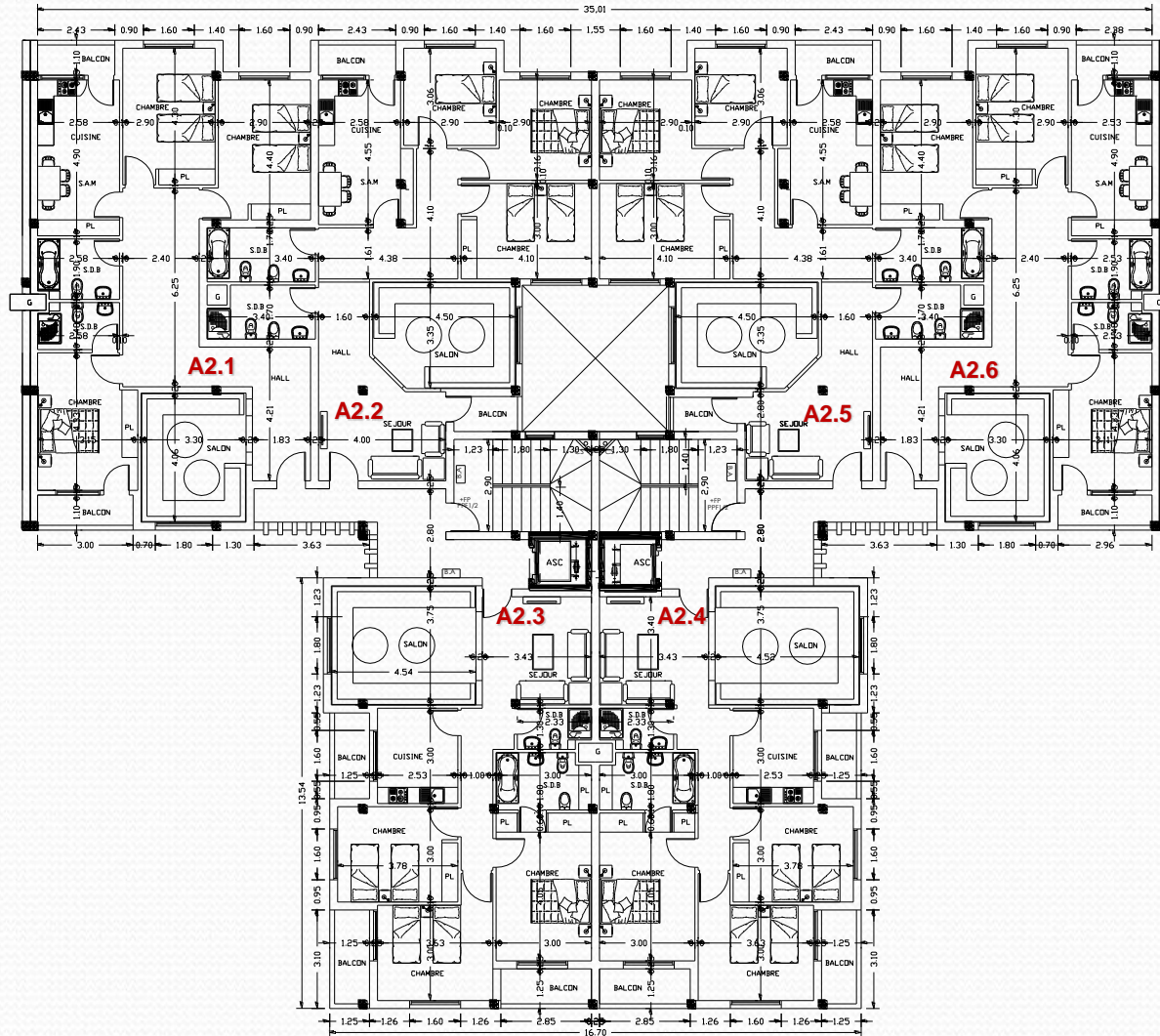
Rez de chaussee local commercial bloc B.



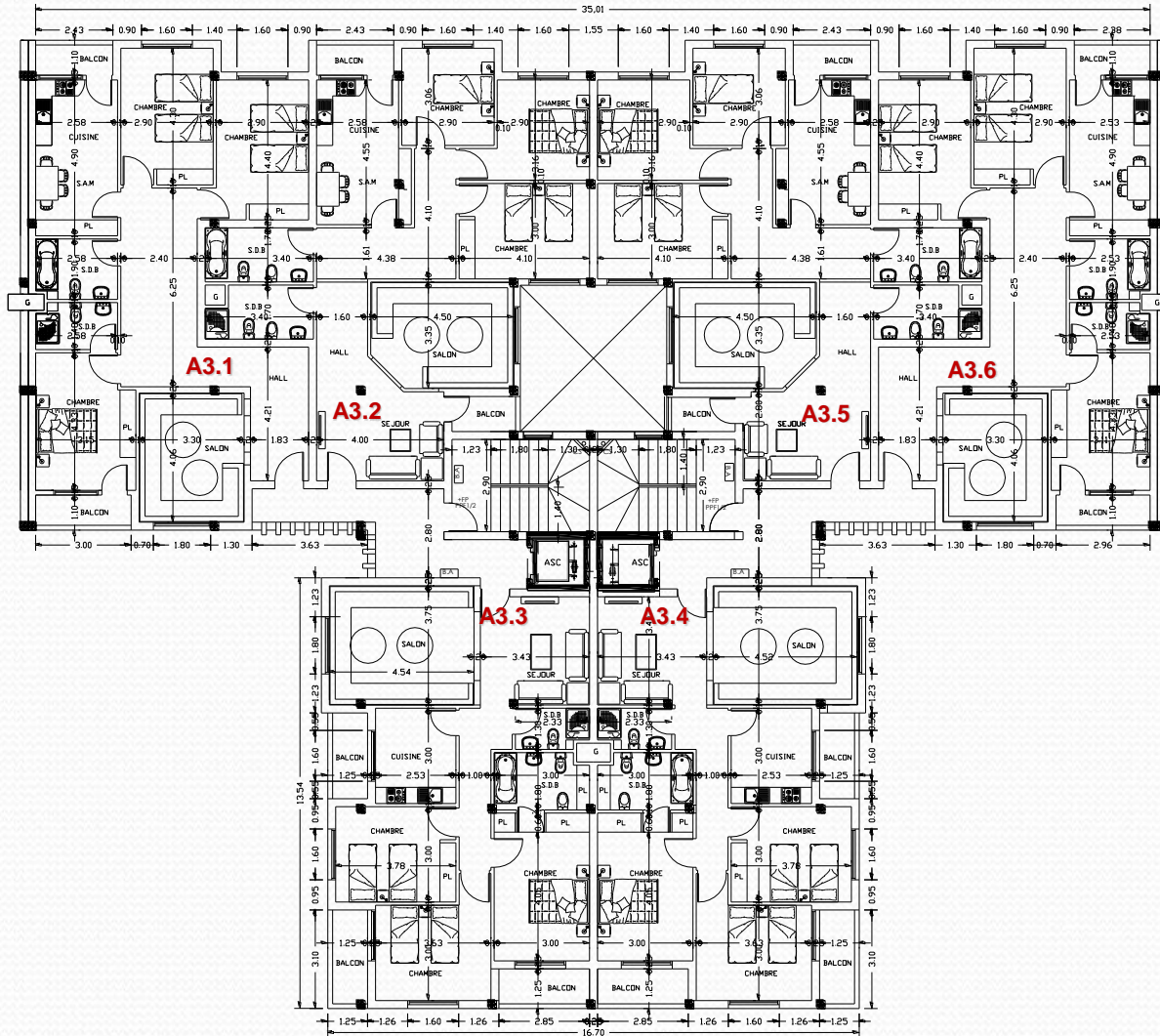
1^{er} étage bloc B.



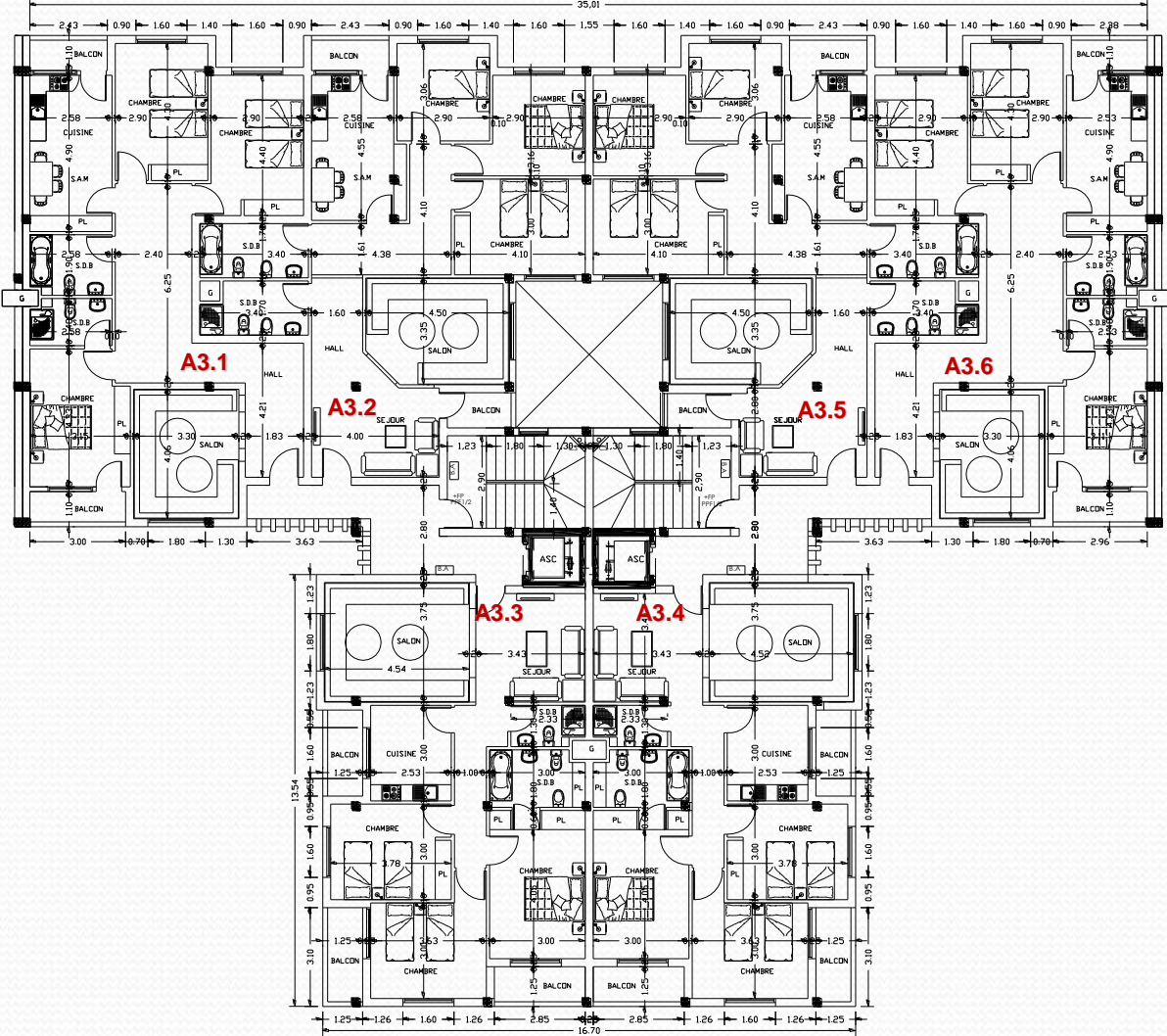
2eme etage bloc B.

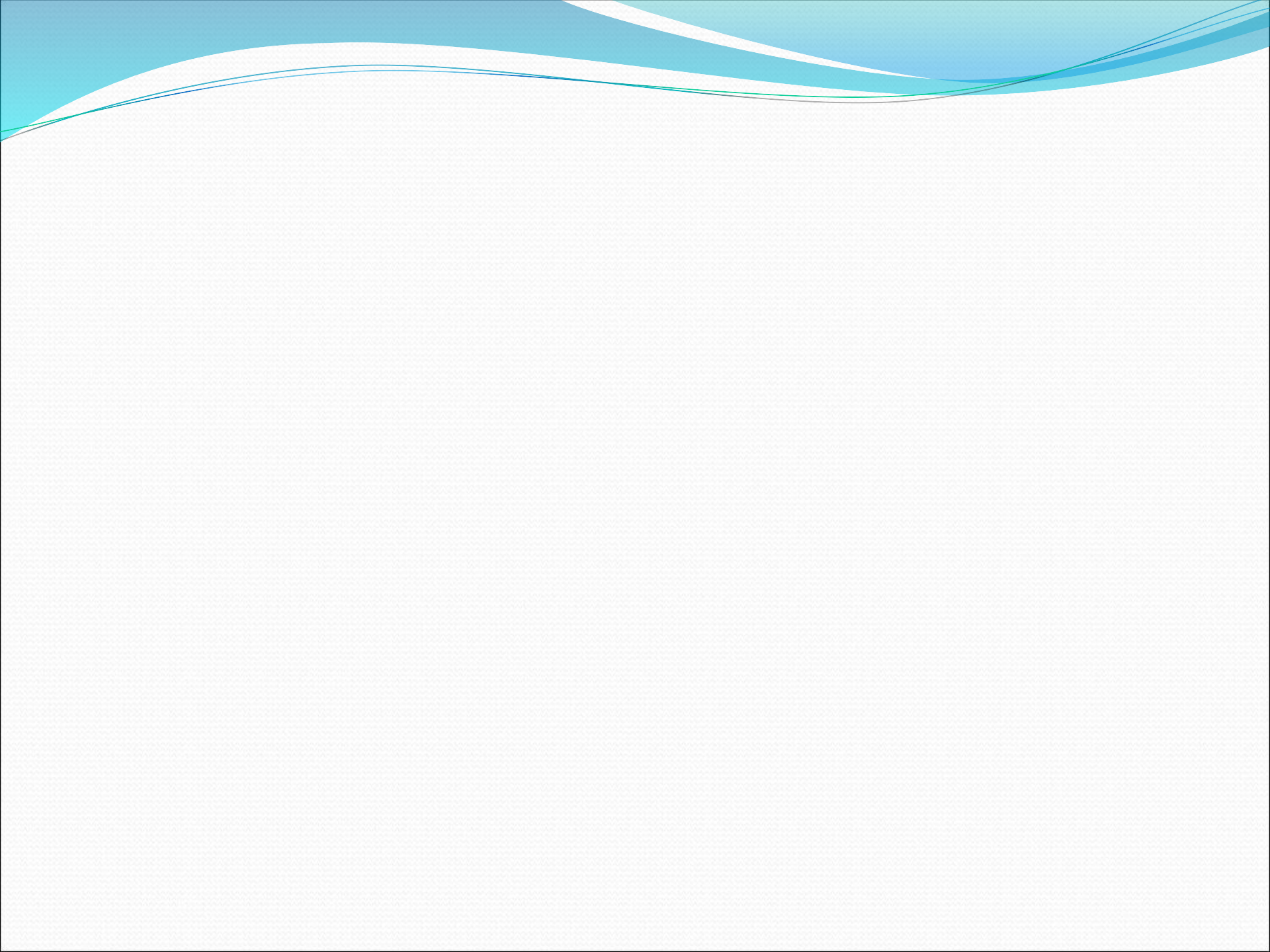


3eme etage bloc B.

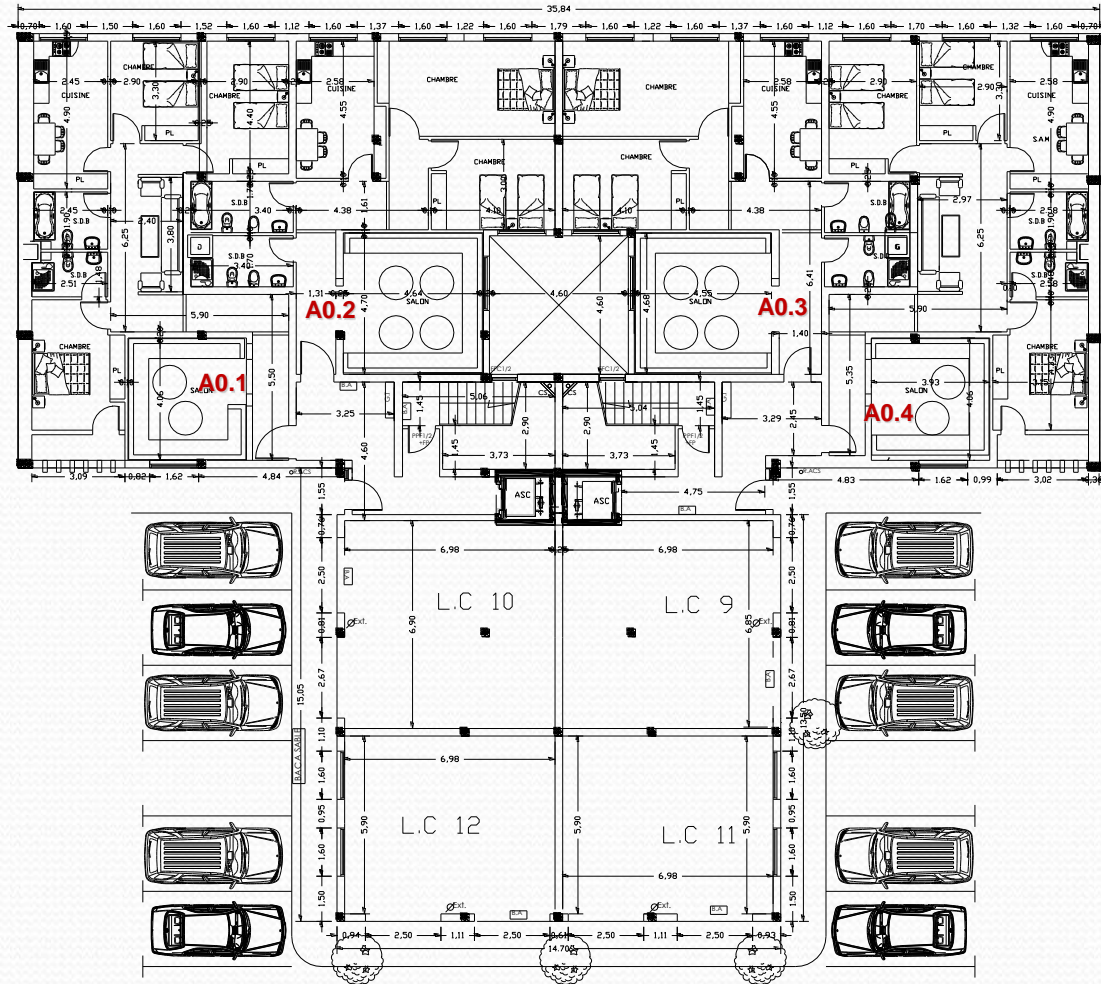


4eme etage bloc B.

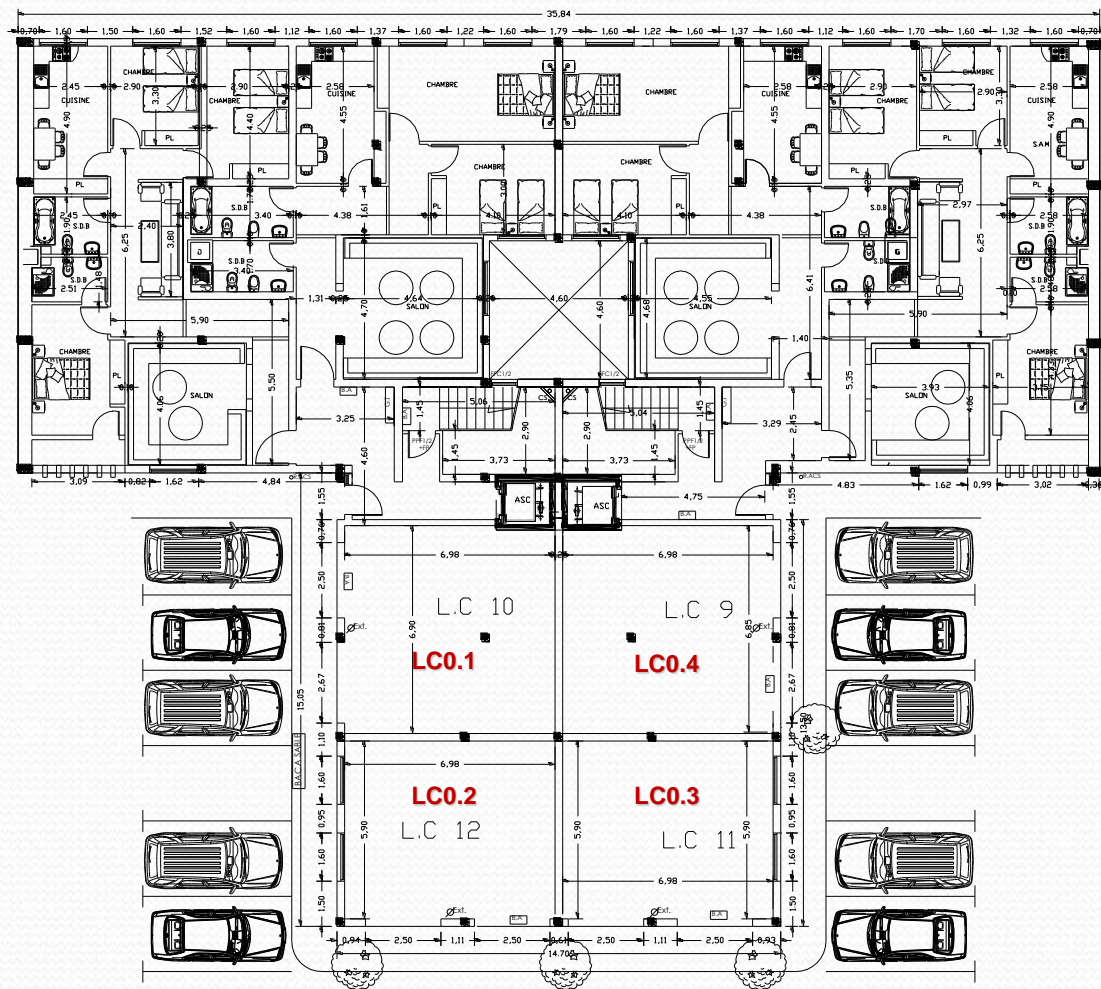




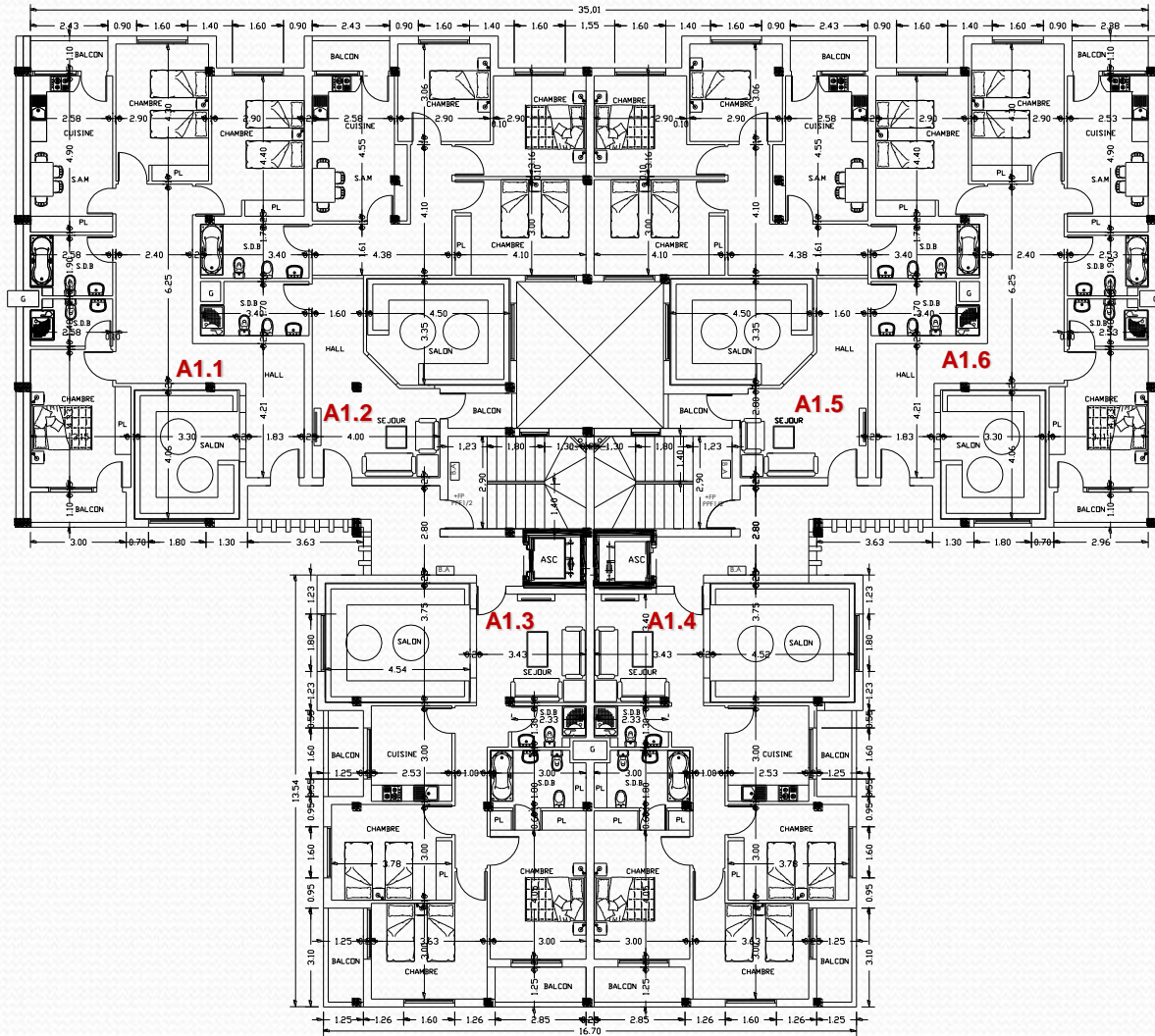
Rez de chaussee bloc C.



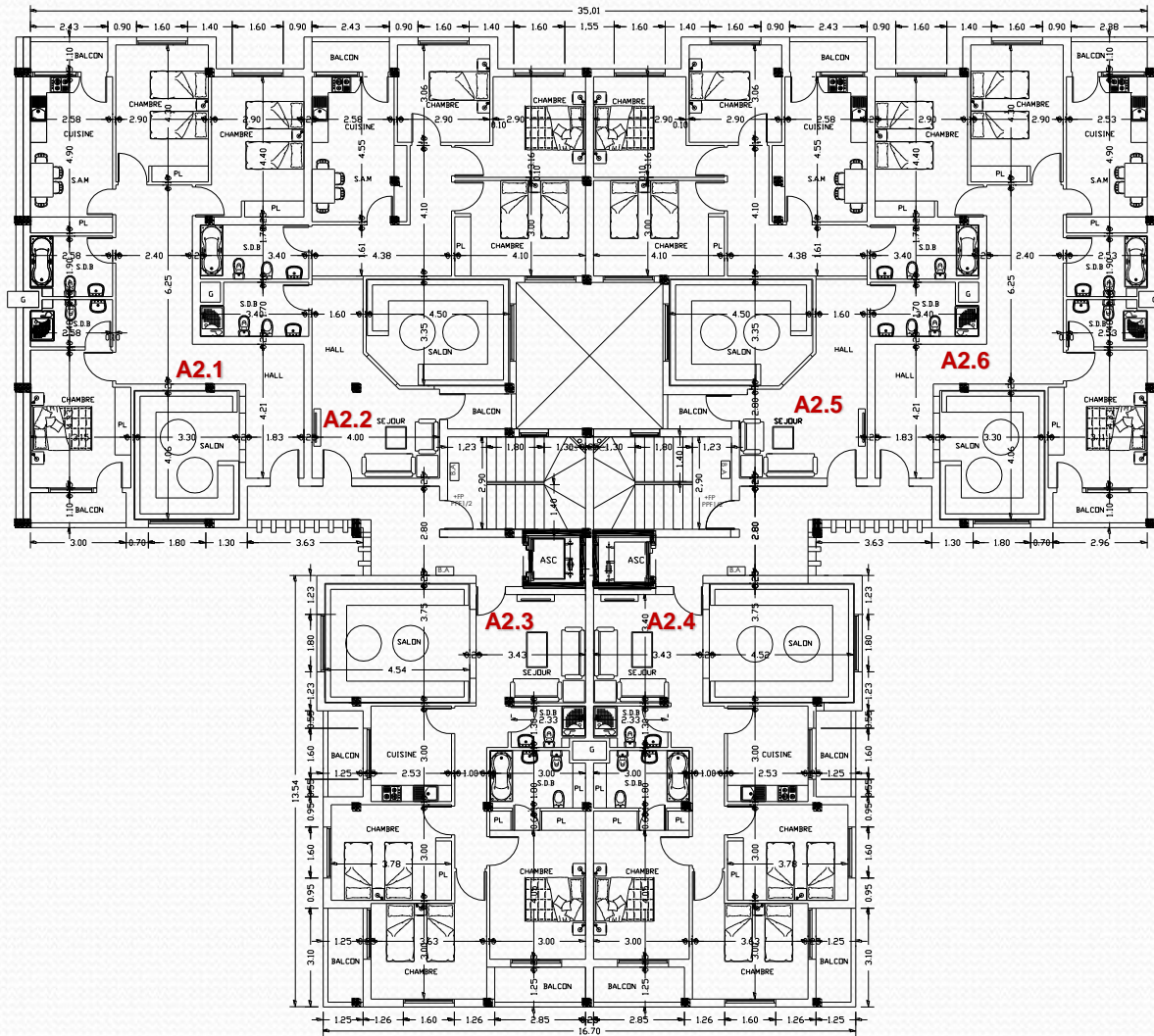
Rez de chaussee local commercial bloc C.



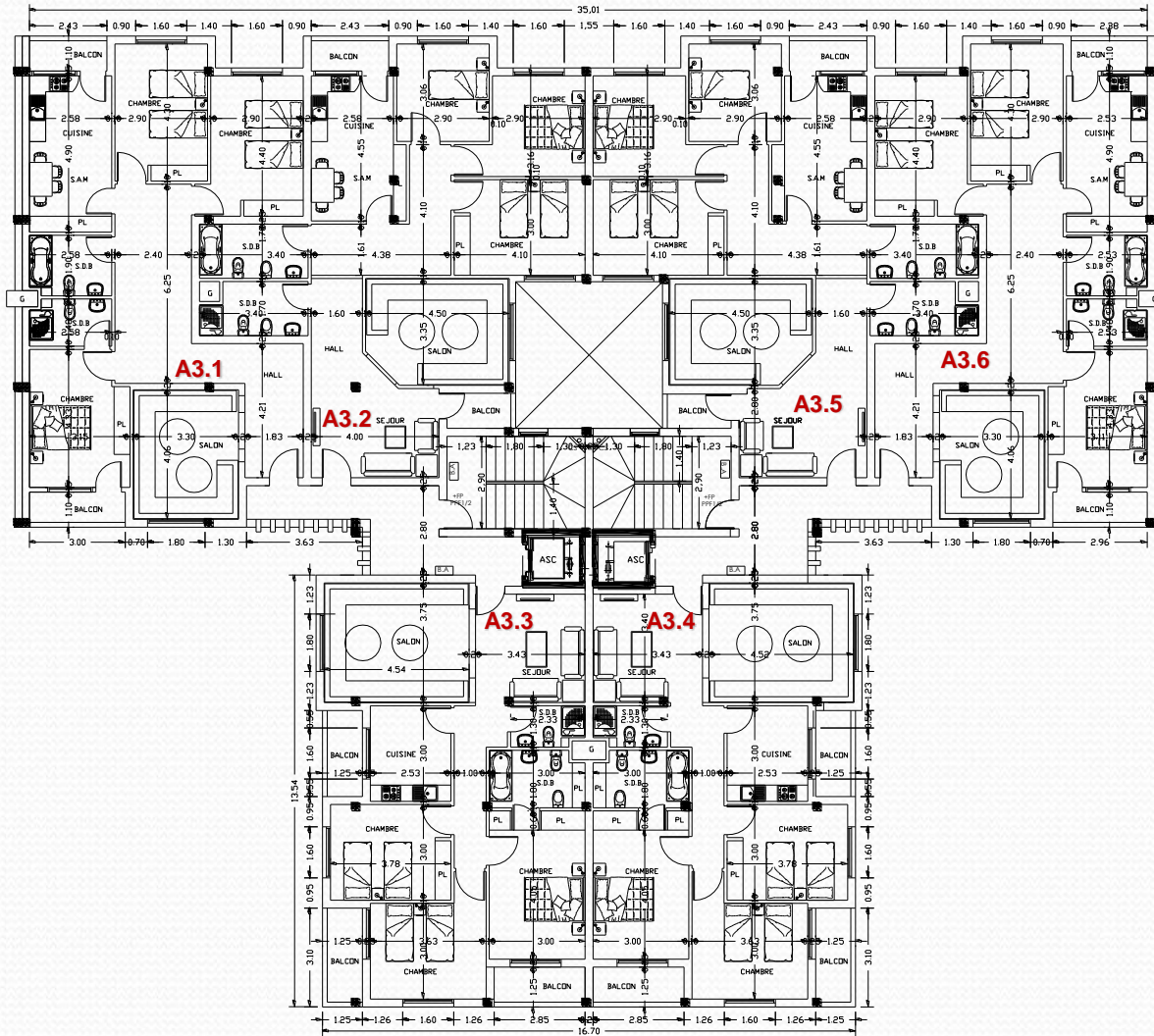
1^{er} étage bloc C.



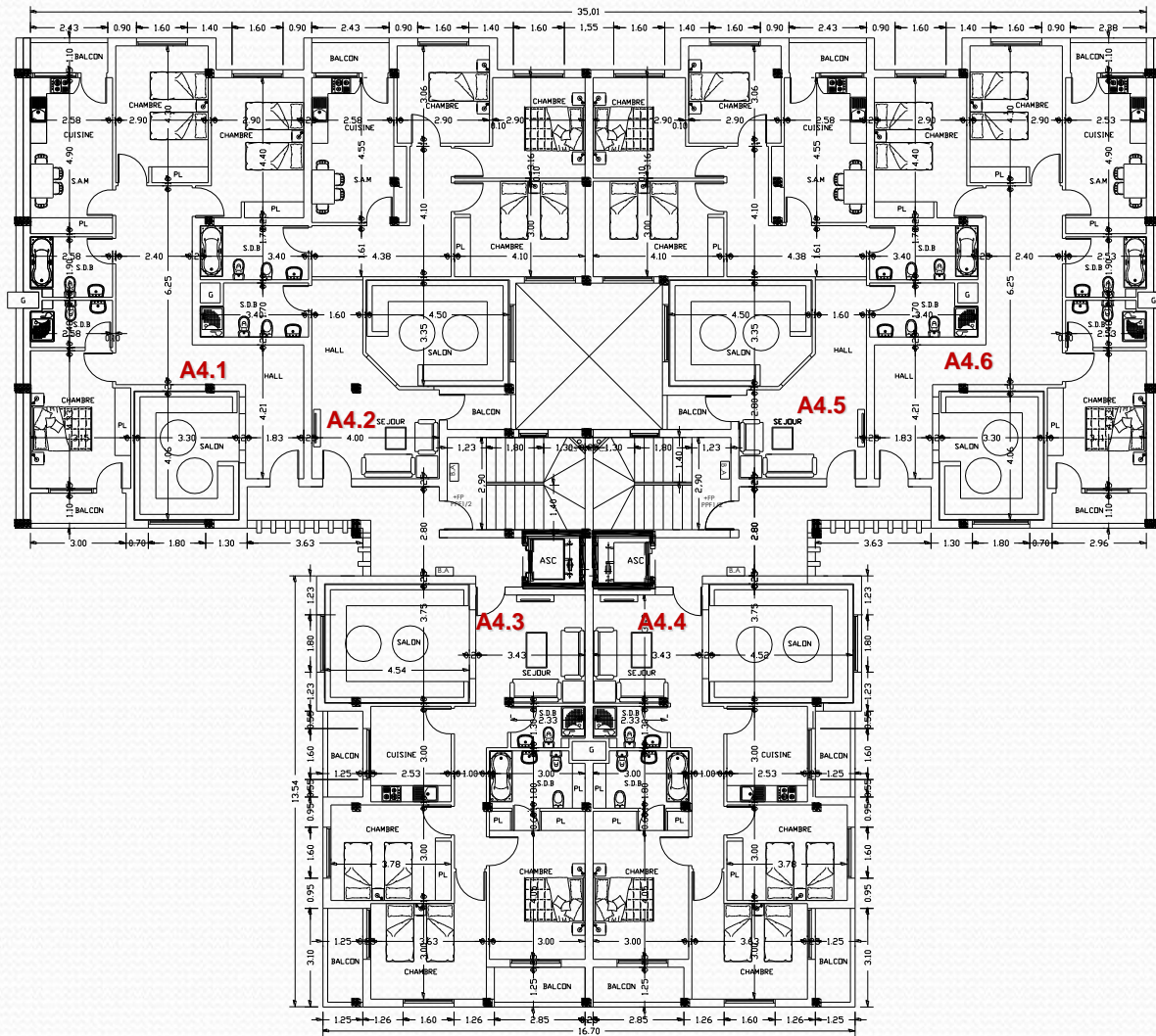
2eme etage bloc C.

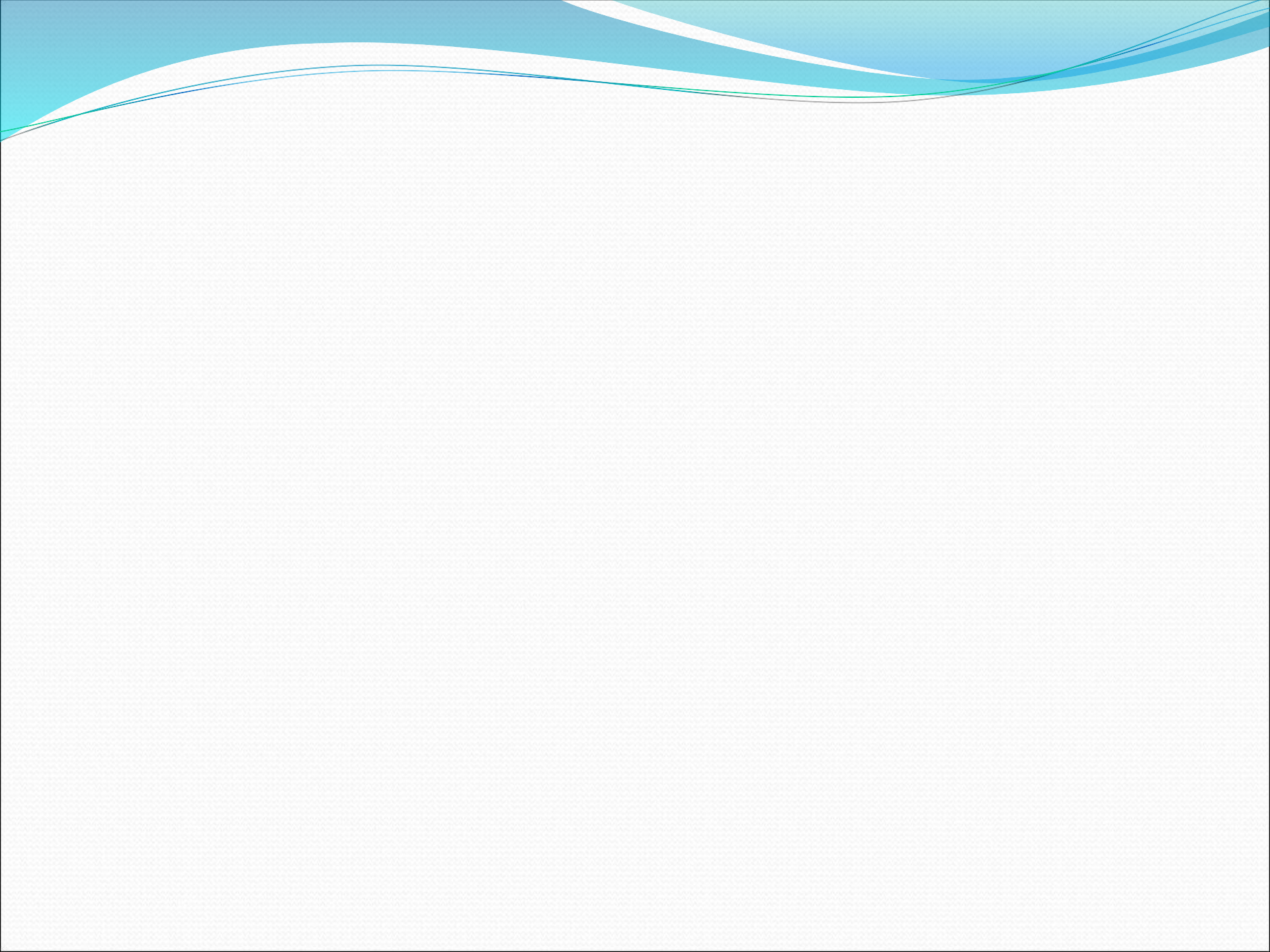


3eme etage bloc C.

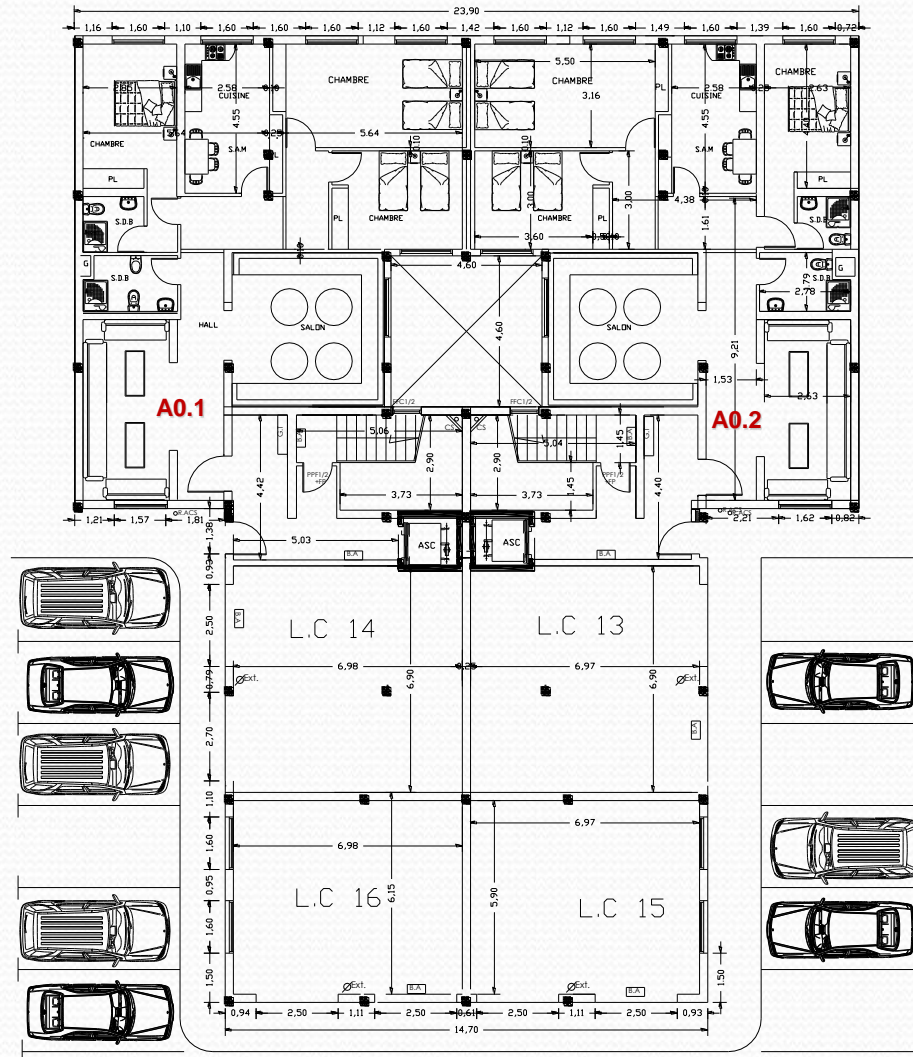


4eme etage bloc C.

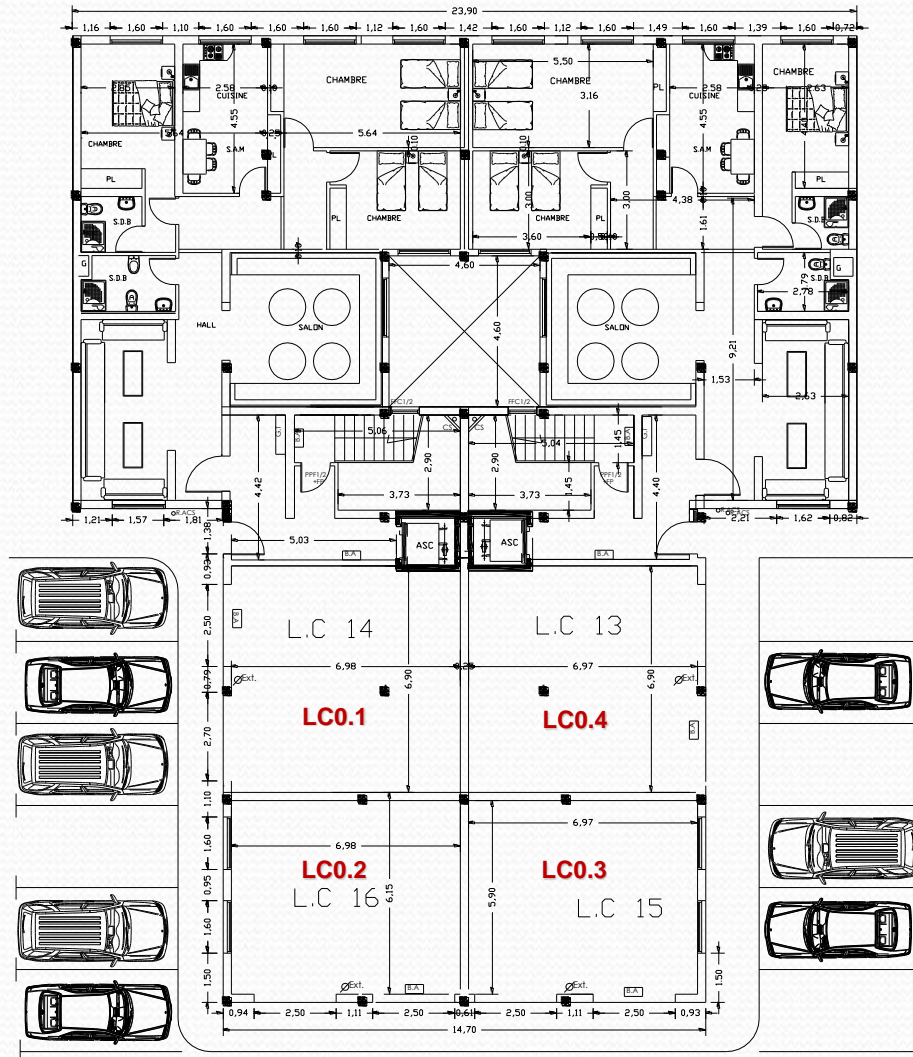




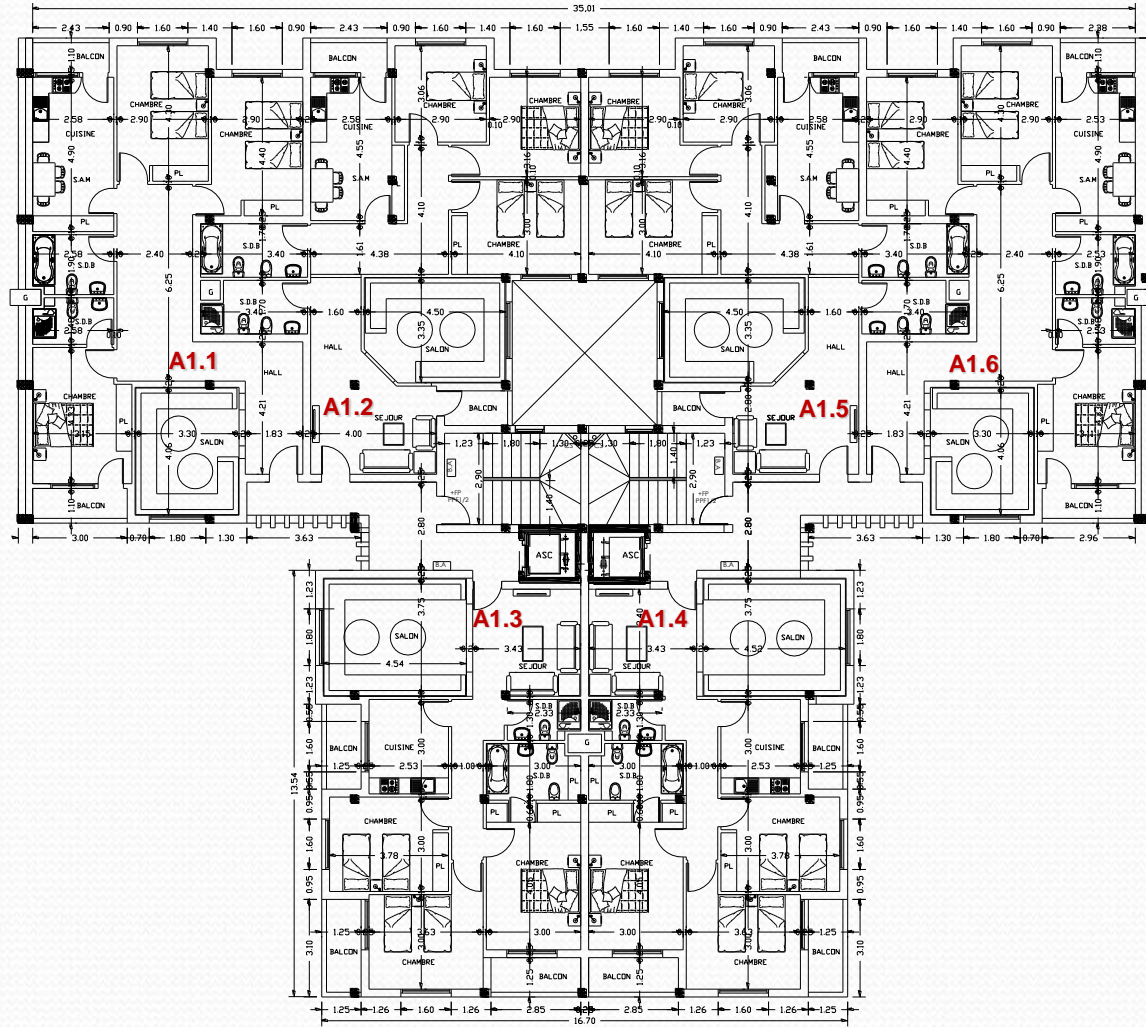
Rez de chaussee bloc D.



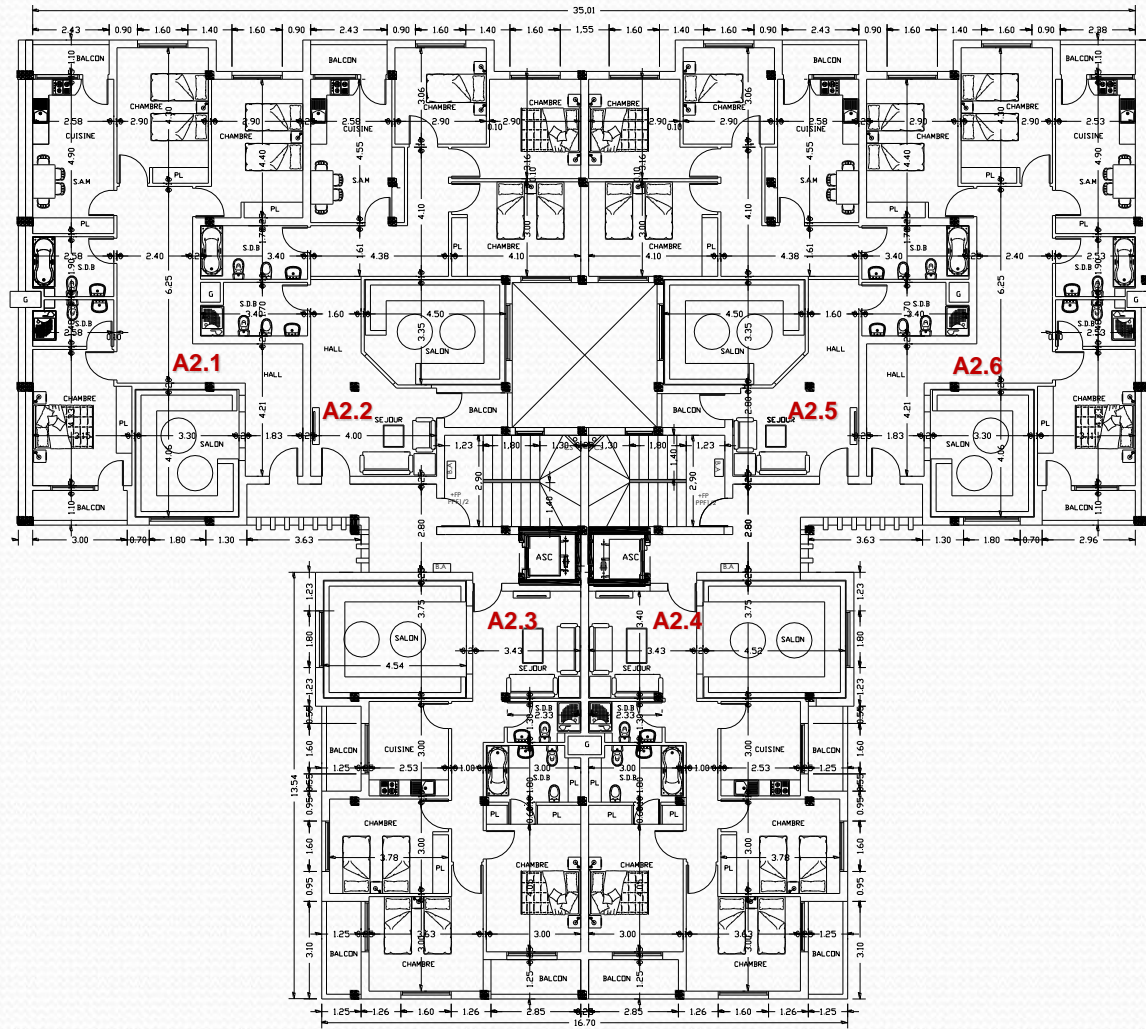
Rez de chaussee local commercial bloc D.



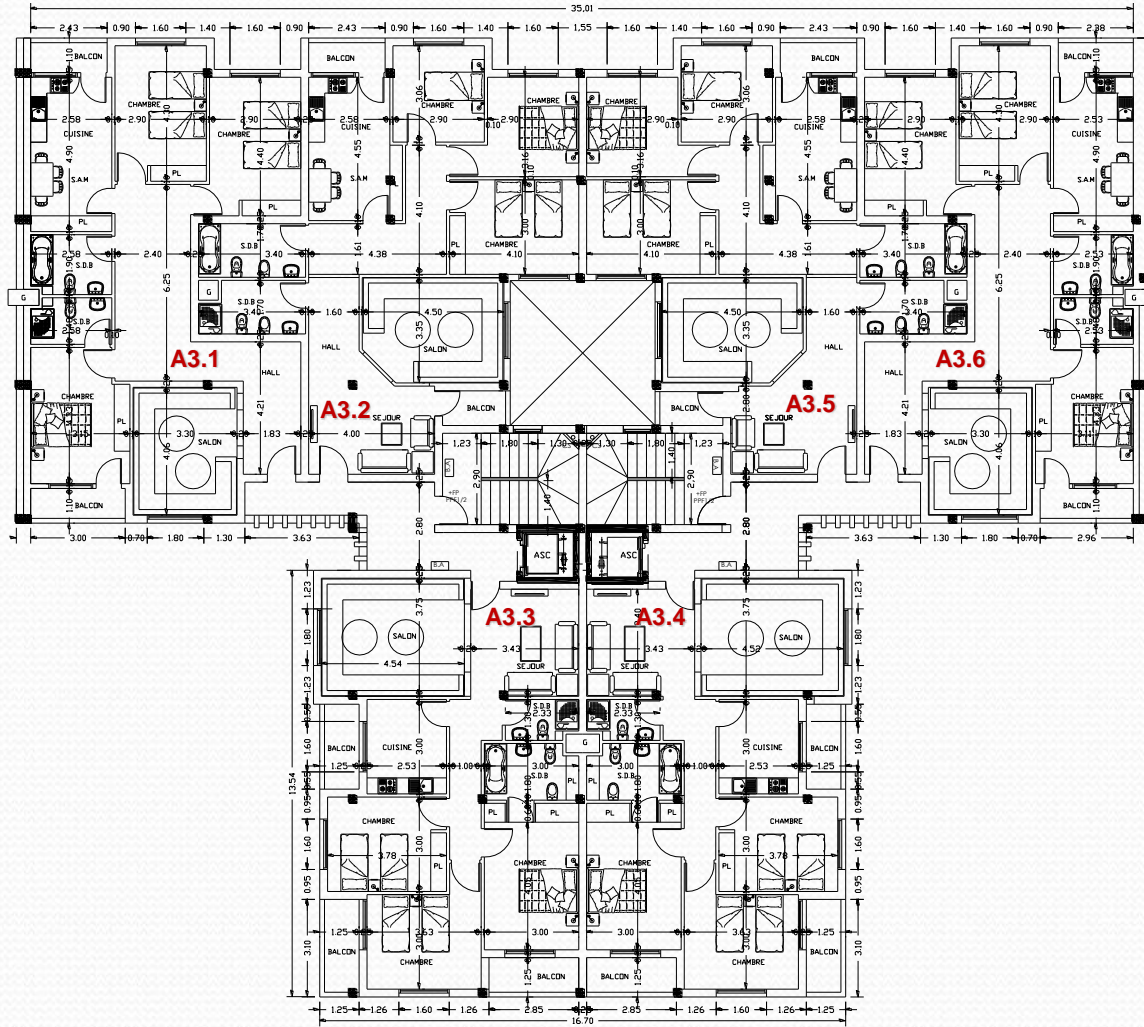
1^{er} étage bloc D.



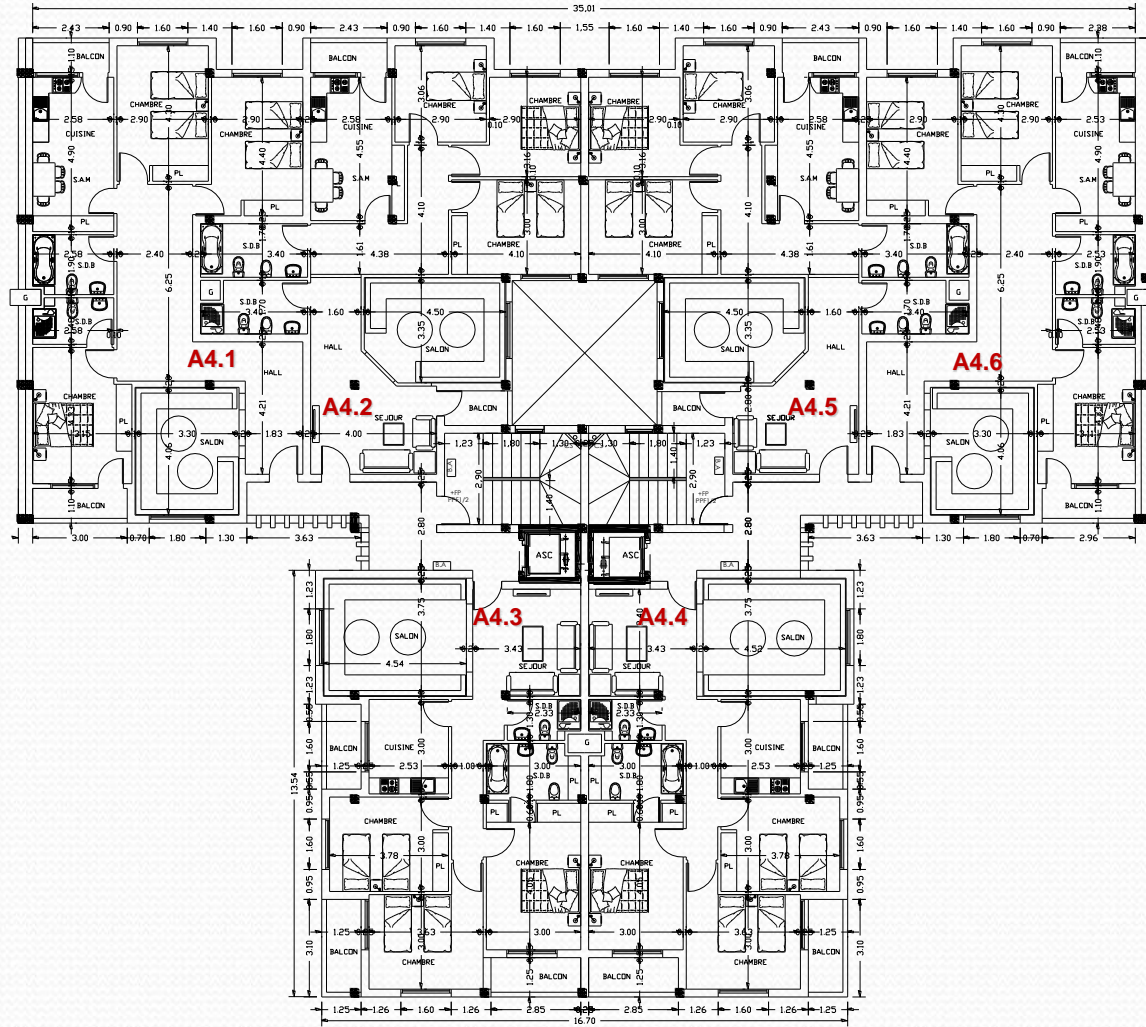
2eme etage bloc D.

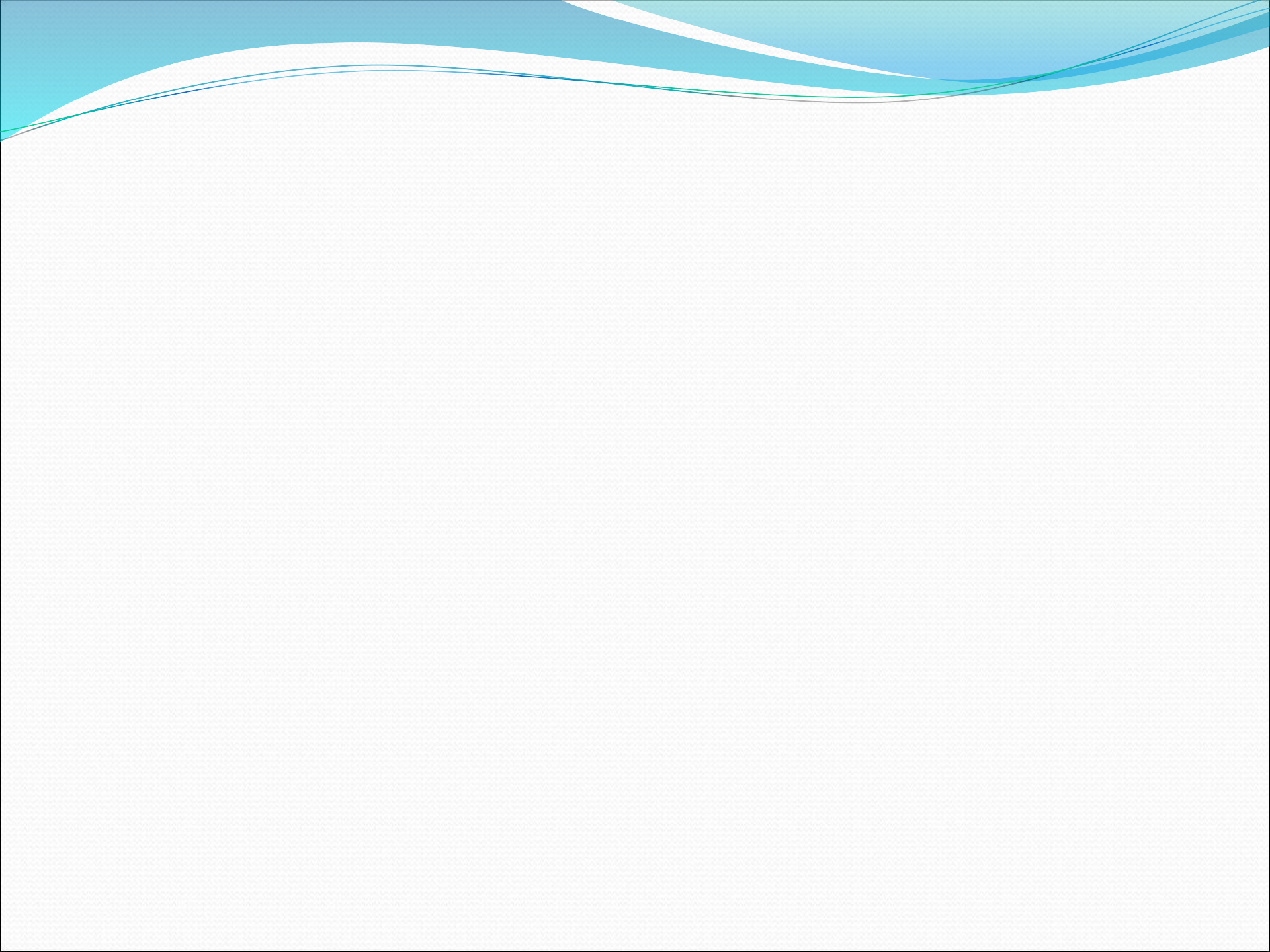


3eme etage bloc D.

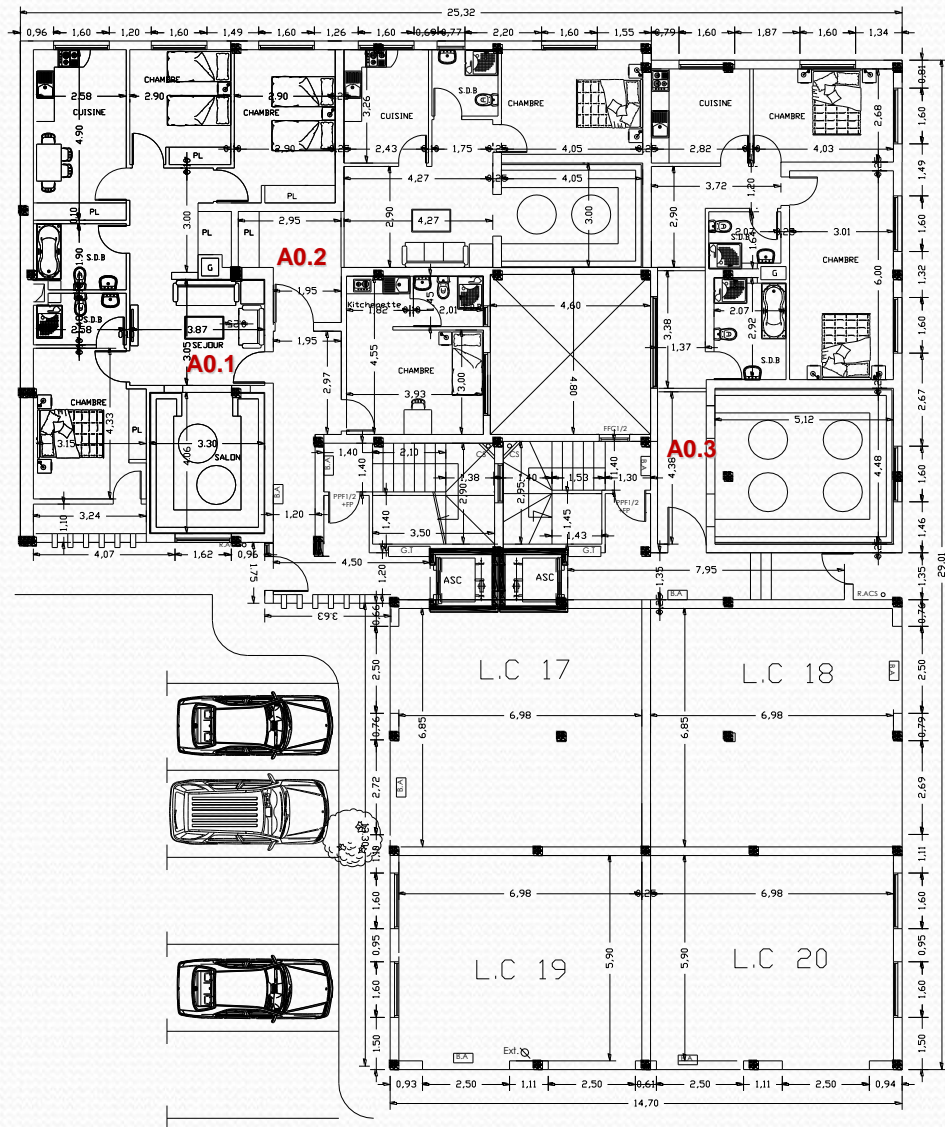


4eme etage bloc D.

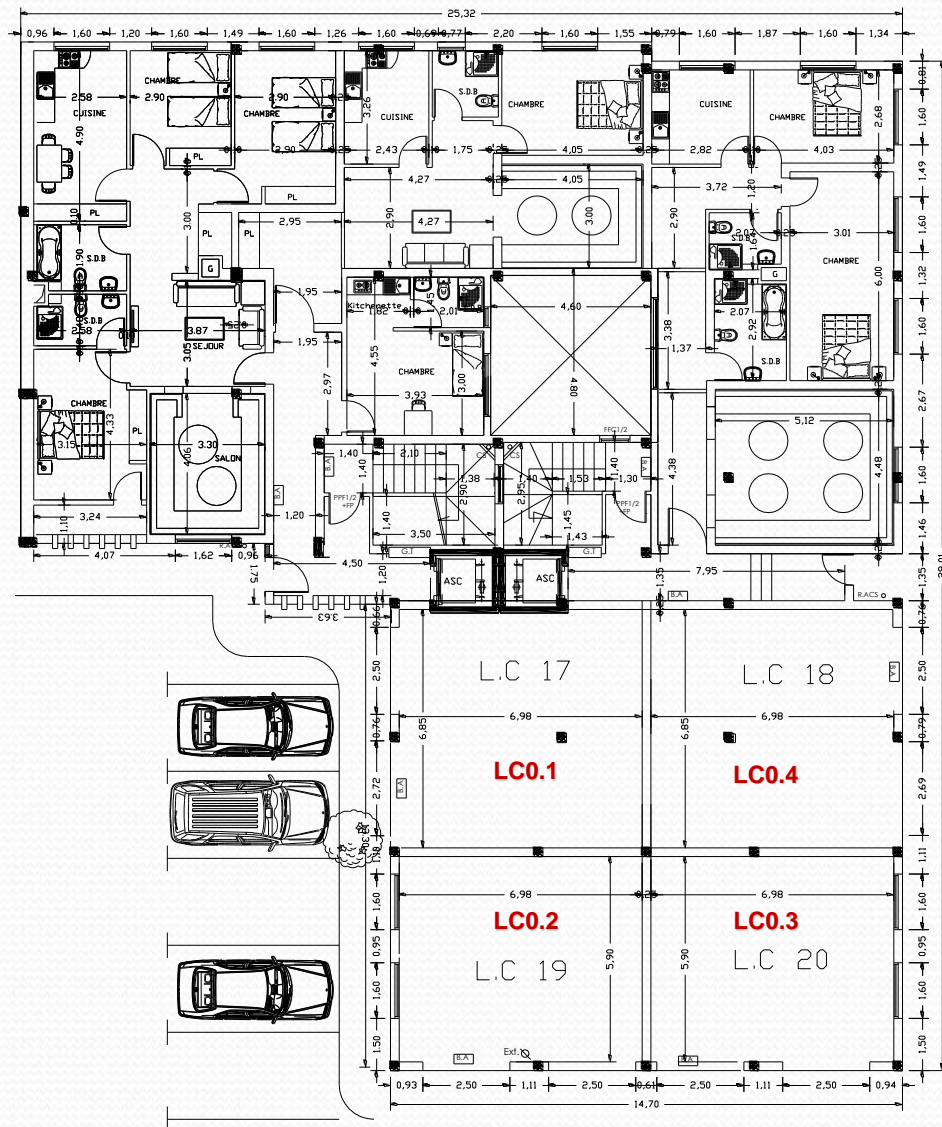




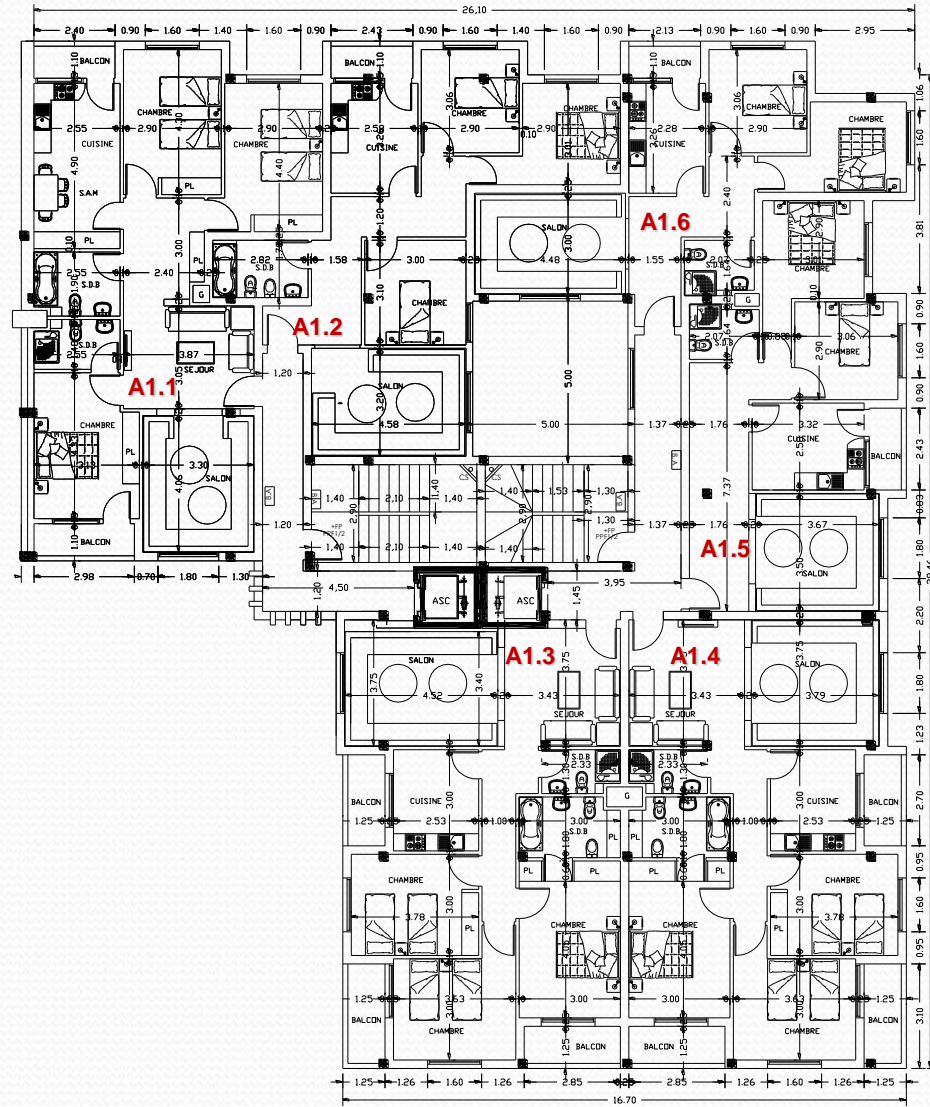
Rez de chaussee bloc E.



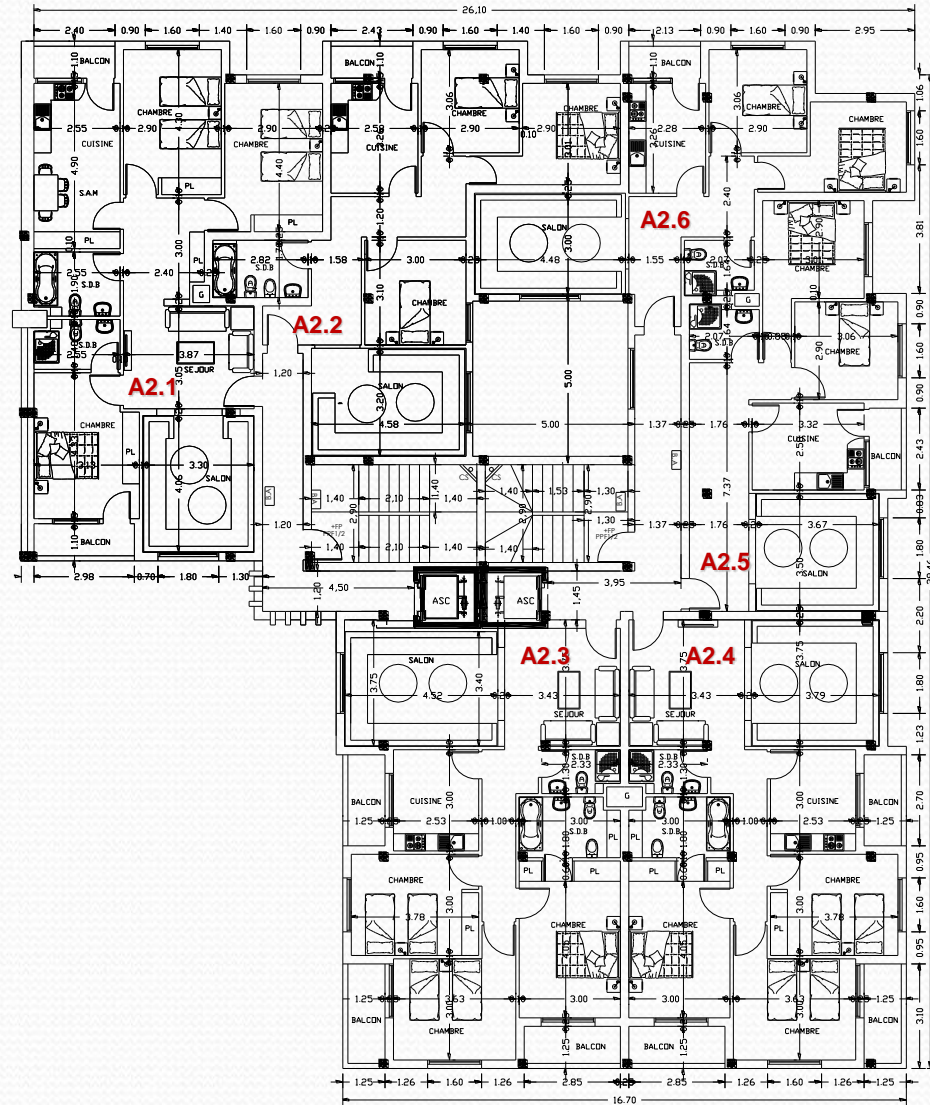
Rez de chaussee local commercial bloc E.



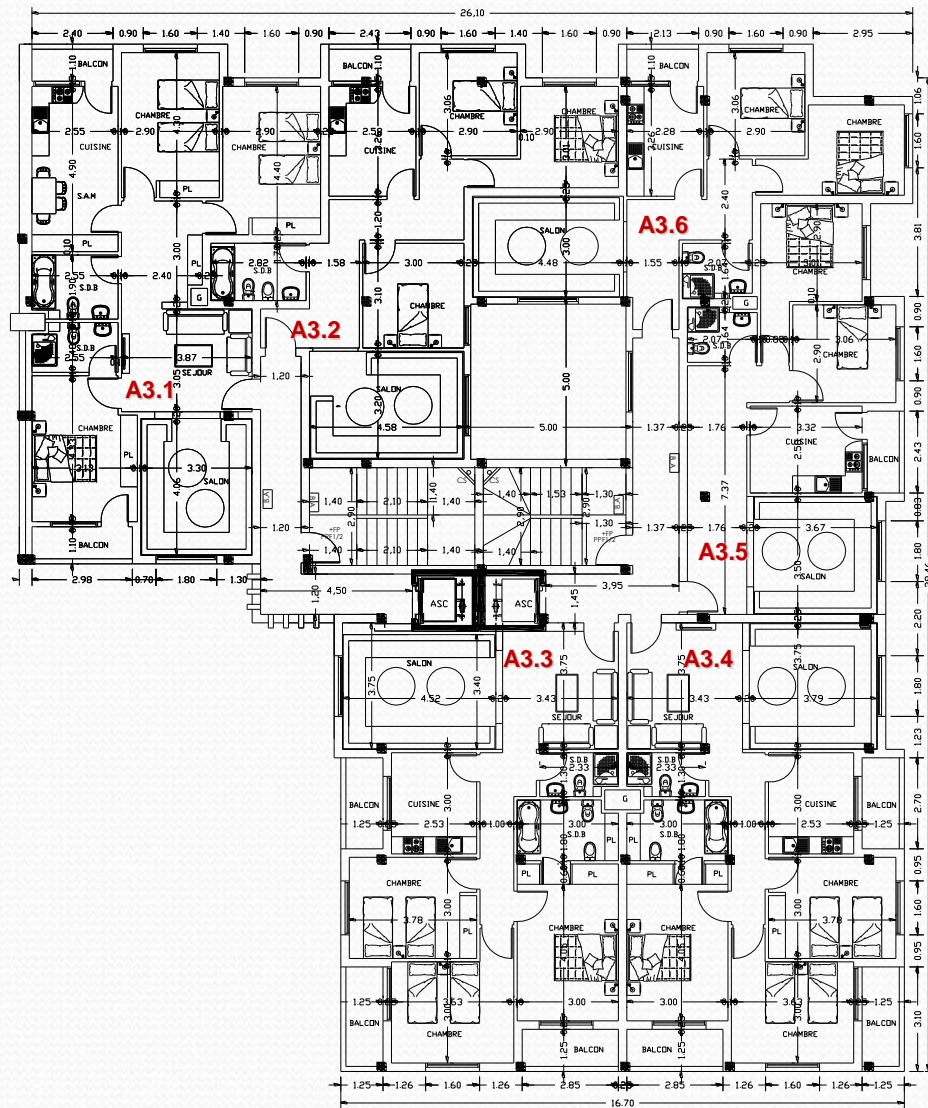
1^{er} étage bloc E.



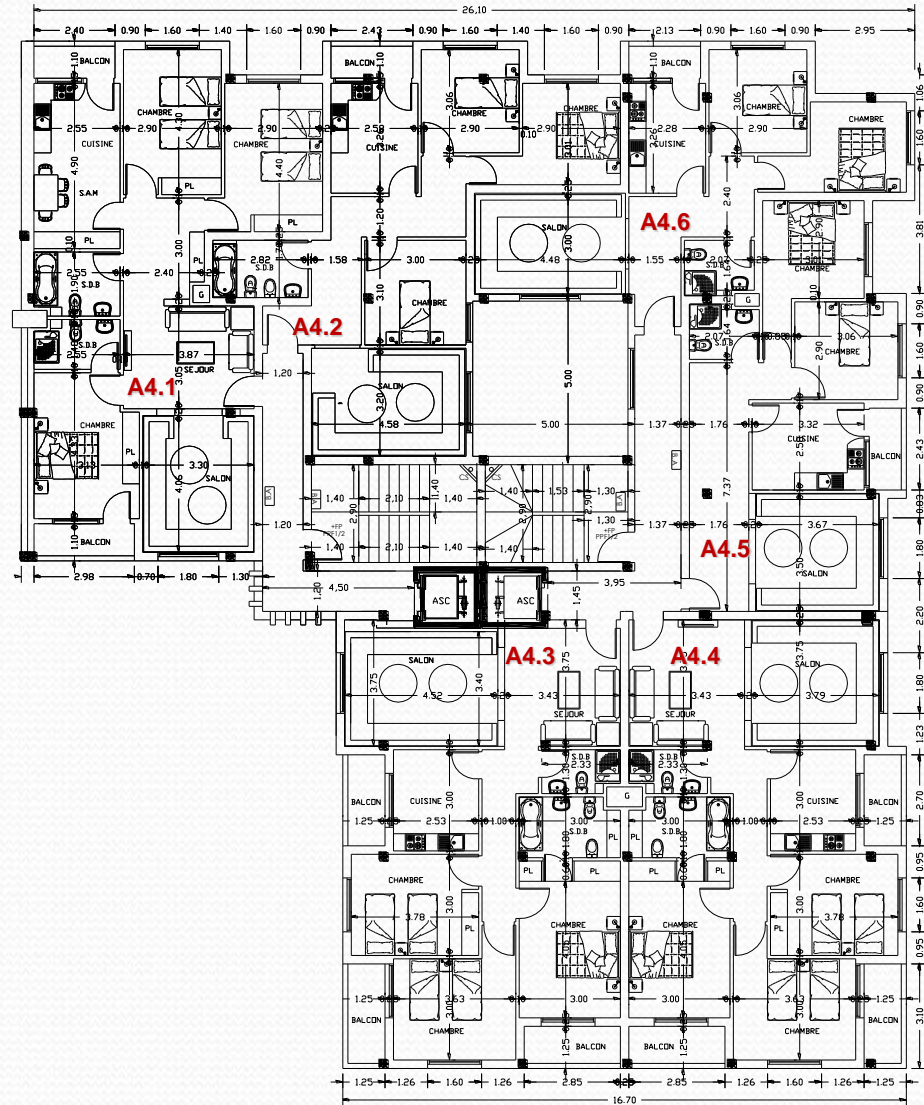
2eme etage bloc E.



3eme etage bloc E.



4eme etage bloc E.



Contenance et surface.

RDC BLOC - A	SURFACE	FACADES	RDC BLOC - B	SURFACE	FACADE	RDC BLOC - C	SURFACE	FACADE	RDC BLOC - D	SURFACE	FACADE	RDC BLOC - E	SURFACE	FACADE
A0.1	101.00	2	B0.1	133.00	2	C0.1	110.00	2	D0.1	133.00	2	E0.1	101.00	2
A0.2	64.00	1	B0.2	133.00	2	C0.2	97.00	1	D0.2	133.00	2	E0.2	64.00	1
A0.3	101.00	2				C0.3	97.00	1				E0.3	101.00	2
						C0.4	110.00	2						

RDC BLOC - A	SURFACE	FACADES	RDC BLOC - B	SURFACE	FACADE	RDC BLOC - C	SURFACE	FACADE	RDC BLOC - D	SURFACE	FACADE	RDC BLOC - E	SURFACE	FACADE
LCA0.1	48.00	1	LCB0.1	48.00	1	LCC0.1	48.00	1	LCD0.1	48.00	1	LCE0.1	48.00	1
LCA0.2	37.00	2	LCB0.2	41.00	2	LCC0.2	41.00	2	LCD0.2	41.00	2	LCE0.2	41.00	2
LCA0.3	37.00	2	LCB0.3	41.00	2	LCC0.3	41.00	2	LCD0.3	41.00	2	LCE0.3	41.00	2
LCA0.4	48.00	1	LCB0.4	48.00	1	LCC0.4	48.00	1	LCD0.4	48.00	1	LCE0.4	48.00	1

Contenance et surface.

1 ^o ETAGE BLOC - A	SURFACE	FACADES	1 ^o ETAGE BLOC - B	SURFACE	FACADE	1 ^o ETAGE BLOC - C	SURFACE	FACADE	1 ^o ETAGE BLOC - D	SURFACE	FACADE	1 ^o ETAGE BLOC - E	SURFACE	FACADE
A1.1	60.00	2	B1.1	112.00	2	C1.1	112.00	2	D1.1	112.00	2	E1.1	105.00	2
A1.2	67.00	1	B1.2	110.00	1	C1.2	110.00	1	D1.2	110.00	1	E1.2	77.00	1
A1.3	103.00	2	B1.3	109.00	2	C1.3	109.00	2	D1.3	109.00	2	E1.3	108.00	2
A1.4	104.00	2	B1.4	109.00	2	C1.4	109.00	2	D1.4	109.00	2	E1.4	107.00	2
A1.5	105.00	2	B1.5	110.00	1	C1.5	110.00	1	D1.5	110.00	1	E1.5	67.00	1
A1.6	77.00	1	B1.6	112.00	2	C1.6	112.00	2	D1.6	112.00	2	E1.6	60.00	2

2 ^o ETAGE BLOC - A	SURFACE	FACADES	2 ^o ETAGE BLOC - B	SURFACE	FACADE	2 ^o ETAGE BLOC - C	SURFACE	FACADE	2 ^o ETAGE BLOC - D	SURFACE	FACADE	2 ^o ETAGE BLOC - E	SURFACE	FACADE
A2.1	60.00	2	B2.1	112.00	2	C2.1	112.00	2	D2.1	112.00	2	E2.1	105.00	2
A2.2	67.00	1	B2.2	110.00	1	C2.2	110.00	1	D2.2	110.00	1	E2.2	77.00	1
A2.3	103.00	2	B2.3	109.00	2	C2.3	109.00	2	D2.3	109.00	2	E2.3	108.00	2
A2.4	104.00	2	B2.4	109.00	2	C2.4	109.00	2	D2.4	109.00	2	E2.4	107.00	2
A2.5	105.00	2	B2.5	110.00	1	C2.5	110.00	1	D2.5	110.00	1	E2.5	67.00	1
A2.6	77.00	1	B2.6	112.00	2	C2.6	112.00	2	D2.6	112.00	2	E2.6	60.00	2

Contenance et surface.

3 ^o ETAGE BLOC - A	SURFACE	FACADES	3 ^o ETAGE BLOC - B	SURFACE	FACADE	3 ^o ETAGE BLOC - C	SURFACE	FACADE	3 ^o ETAGE BLOC - D	SURFACE	FACADE	3 ^o ETAGE BLOC - E	SURFACE	FACADE
A3.1	60.00	2	B3.1	112.00	2	C3.1	112.00	2	D3.1	112.00	2	E3.1	105.00	2
A3.2	67.00	1	B3.2	110.00	1	C3.2	110.00	1	D3.2	110.00	1	E3.2	77.00	1
A3.3	103.00	2	B3.3	109.00	2	C3.3	109.00	2	D3.3	109.00	2	E3.3	108.00	2
A3.4	104.00	2	B3.4	109.00	2	C3.4	109.00	2	D3.4	109.00	2	E3.4	107.00	2
A3.5	105.00	2	B3.5	110.00	1	C3.5	110.00	1	D3.5	110.00	1	E3.5	67.00	1
A3.6	77.00	1	B3.6	112.00	2	C3.6	112.00	2	D3.6	112.00	2	E3.6	60.00	2

4 ^o ETAGE BLOC - A	SURFACE	FACADES	4 ^o ETAGE BLOC - B	SURFACE	FACADE	4 ^o ETAGE BLOC - C	SURFACE	FACADE	4 ^o ETAGE BLOC - D	SURFACE	FACADE	4 ^o ETAGE BLOC - E	SURFACE	FACADE
A4.1	60.00	2	B4.1	112.00	2	C4.1	112.00	2	D4.1	112.00	2	E4.1	105.00	2
A4.2	67.00	1	B4.2	110.00	1	C4.2	110.00	1	D4.2	110.00	1	E4.2	77.00	1
A4.3	103.00	2	B4.3	109.00	2	C4.3	109.00	2	D4.3	109.00	2	E4.3	108.00	2
A4.4	104.00	2	B4.4	109.00	2	C4.4	109.00	2	D4.4	109.00	2	E4.4	107.00	2
A4.5	105.00	2	B4.5	110.00	1	C4.5	110.00	1	D4.5	110.00	1	E4.5	67.00	1
A4.6	77.00	1	B4.6	112.00	2	C4.6	112.00	2	D4.6	112.00	2	E4.6	60.00	2

Type 1 facade.



Type 2 facades.

