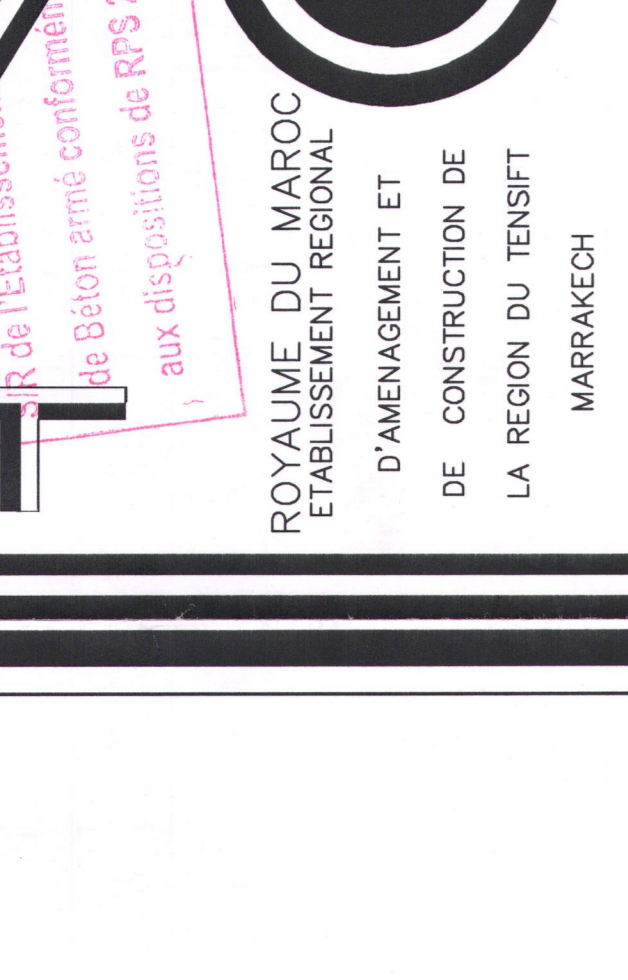


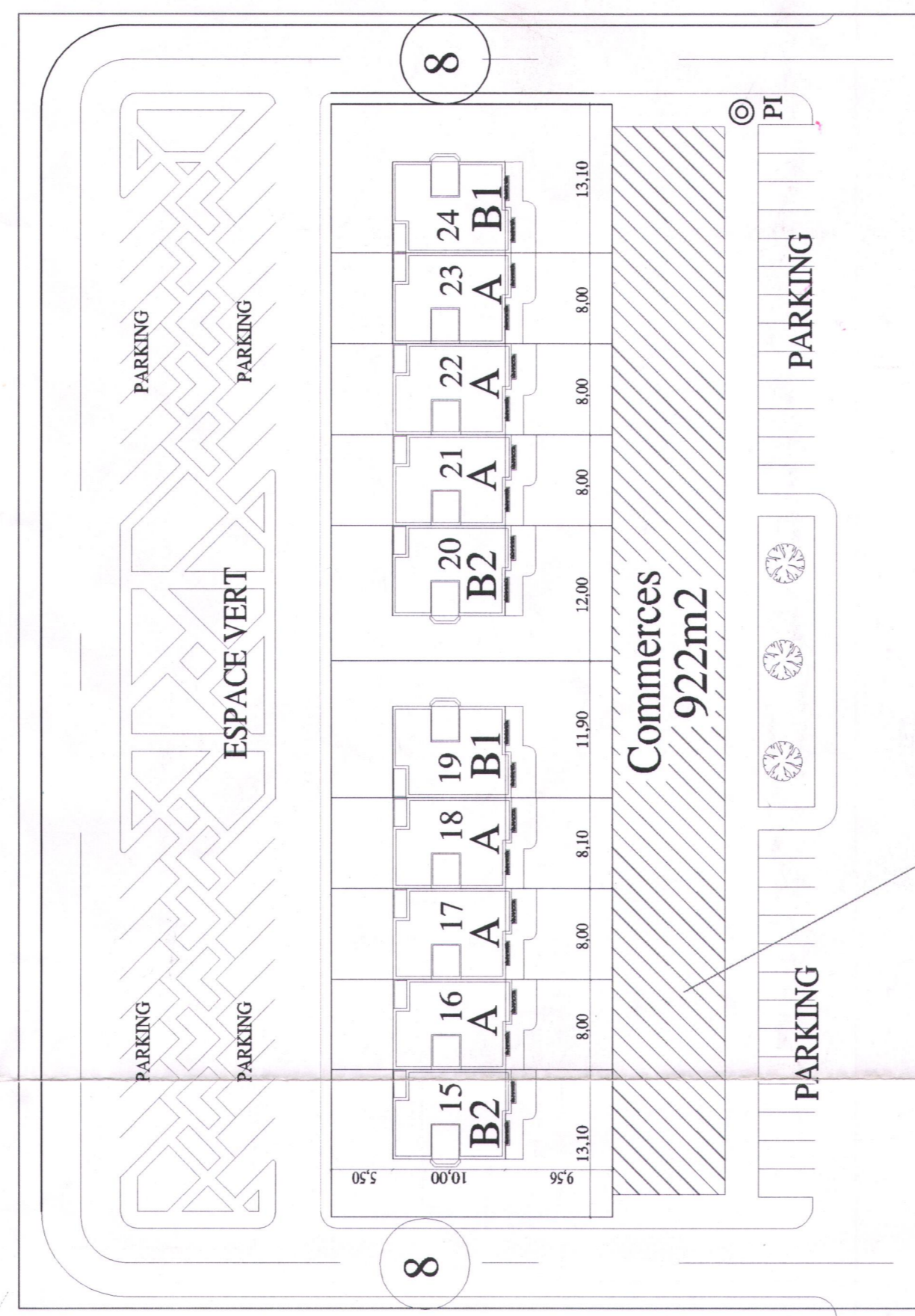
**AVIS FAVORABLE**  
N° 14.401.29.11.06  
N° 14.401.29.11.06



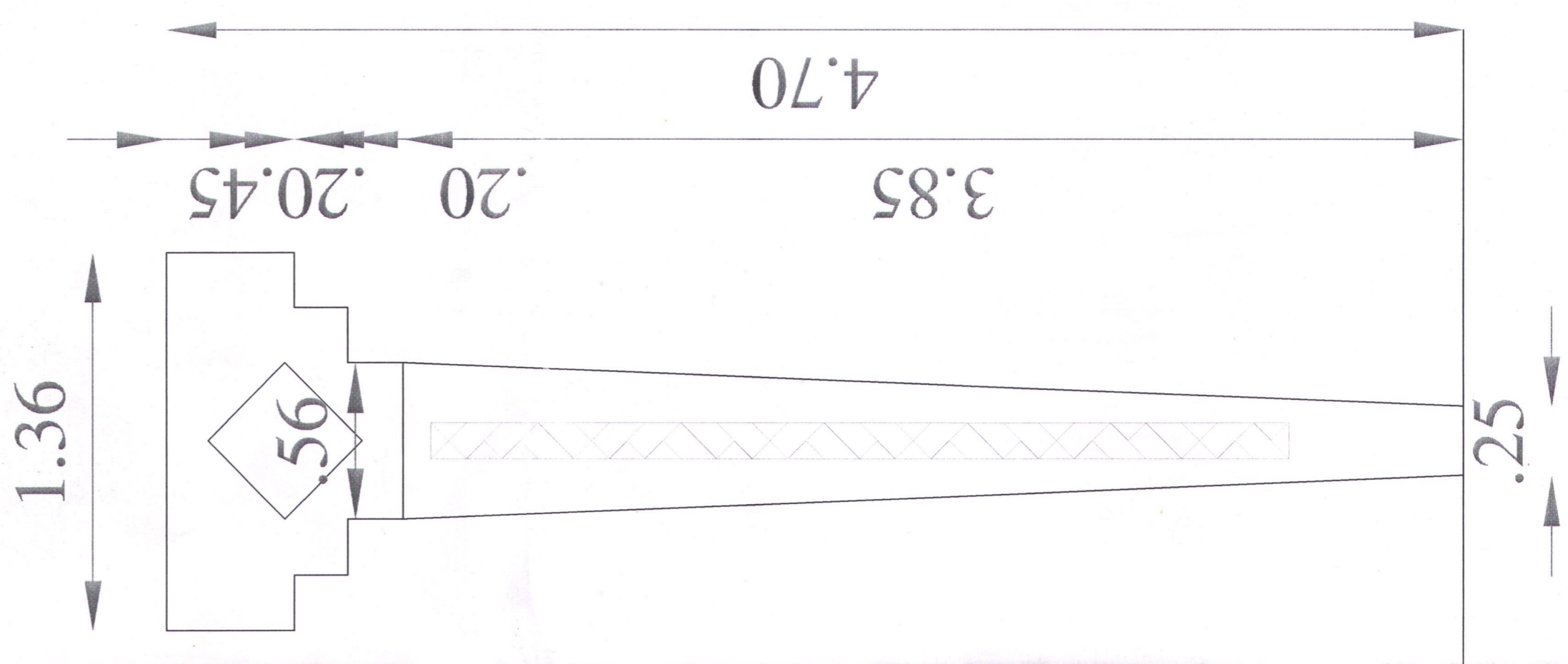
ROYAUME DU MAROC  
ETABLISSEMENT REGIONAL  
D'AMENAGEMENT ET  
DE CONSTRUCTION DE  
LA REGION DU TENSIFT  
MARRAKECH

PROJET  
VILLE NOUVELLE DE TAMANSOURT  
RIAD AL HARWEL  
CENTRE COMMERCIAL

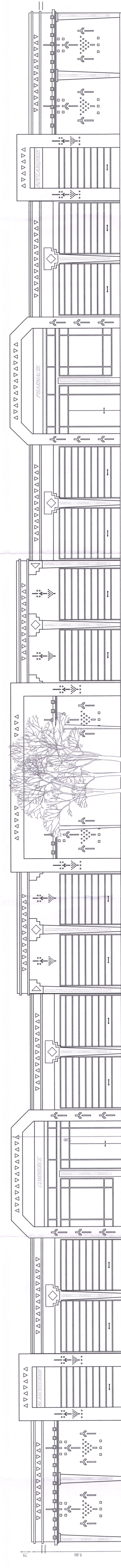
ETUDE : 1 km de TAMANSOURT  
BESSIN :  
ECHAELLE : 1/100  
NUMERO :  
SEPTEMBRE 2006  
PLAN  
PLANS - COUPE -  
FACADE -



**SITUATION**



**DETAIL POTEAU**

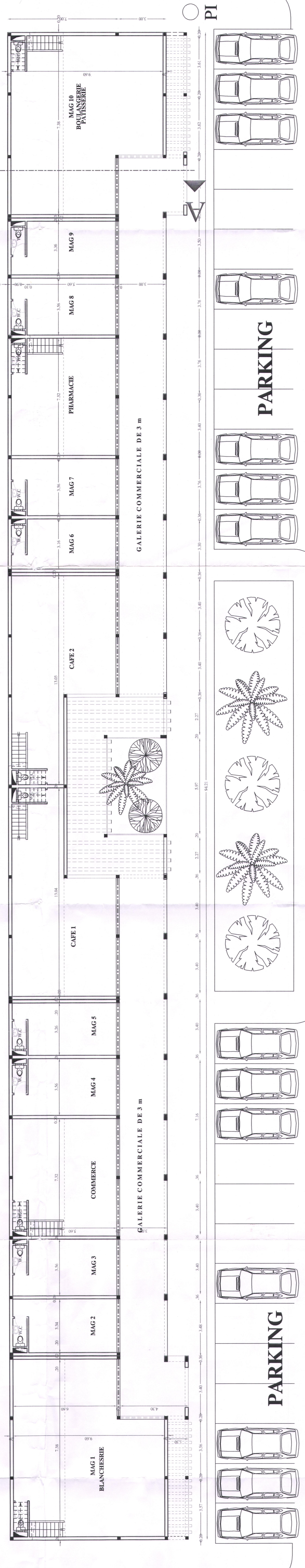


**FACADE PRINCIPALE**

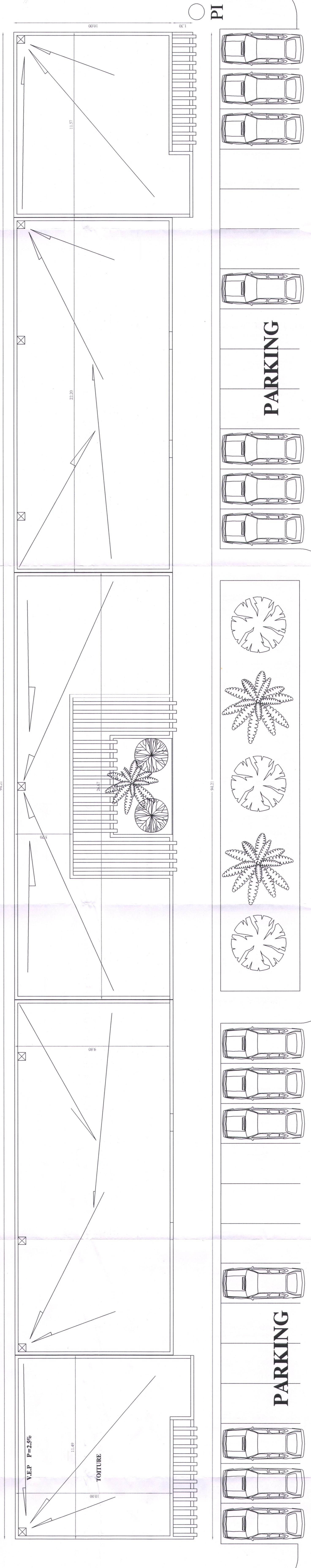
**FACADE LATERALE DROITE**

**FACADE LATERALE GAUCHE**

**COUPE A - A**



**VUE EN PLANS**



**PLAN DE MASSE-TERRASSE**